

The



MISS PAULINE WALLACE,
SPONSOR

Bison

OF 1934

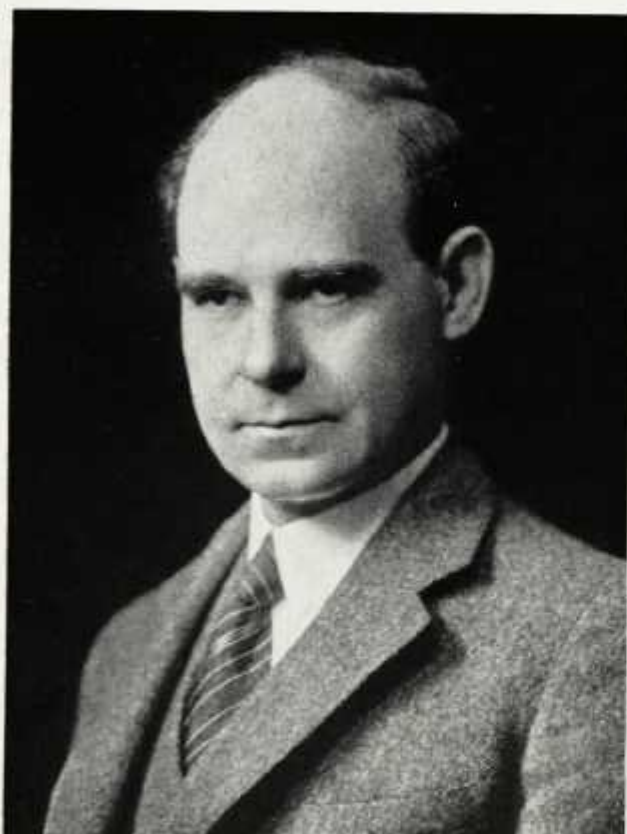


A COMPENDIUM . . . OF . . .
PICTORIAL AND STATISTICAL
DATA COVERING THE
CURRENT . SCHOOL . YEAR
. . . . PRESENTED ANNUALLY
BY THE . . SENIOR CLASS
OF HOWARD UNIVERSITY
. . . WASHINGTON, D. C.





IT IS OUR PLEAS
THIS VOLUME
COOPERATION
OUR INSTITUTION
OF THE UNITED
BY THE DEPART



*R*EADERS of the *Bison*, when you turn these pages in the after years, you will pause again and again before the name and face of one who has come to be a blessing to the people, and your hearts will burn with joy as you recall the days of your association with such an one in the University. Imagine, then the unspeakable gladness of your teachers and administrative servants!

11 0749
H
M 3770
5 724

URE TO DEDICATE TO THE SPIRIT OF EXISTING BETWEEN AND THE GOVERNMENT STATES, AS REPRESENTED MENT OF THE INTERIOR

*H*OWARD UNIVERSITY is truly a national institution. Its student body has been drawn from nearly every State in the Union, and its alumni are counted in virtually every State and in dozens of foreign countries. It should be and is an inspiration to the Negro race. It has steadily forged ahead in its task of fitting the colored youth of the nation, of both sexes, to participate more fully in our social system and in our government. The character of our social order is determined basically by the principles and abilities of those willing and able to accept responsibility. The opportunity for fitting Negroes for this service is one great mission of Howard University, and it is my earnest hope that an increasing number of students will take advantage of the facilities offered by Howard to fit themselves for leadership.

