

Howard University

Digital Howard @ Howard University

Howard University Yearbooks

1-1-1947

The Bison: 1947

Howard University

Follow this and additional works at: https://dh.howard.edu/bison_yearbooks



Part of the [Higher Education Commons](#), [Organizational Communication Commons](#), and the [Public Relations and Advertising Commons](#)

Recommended Citation

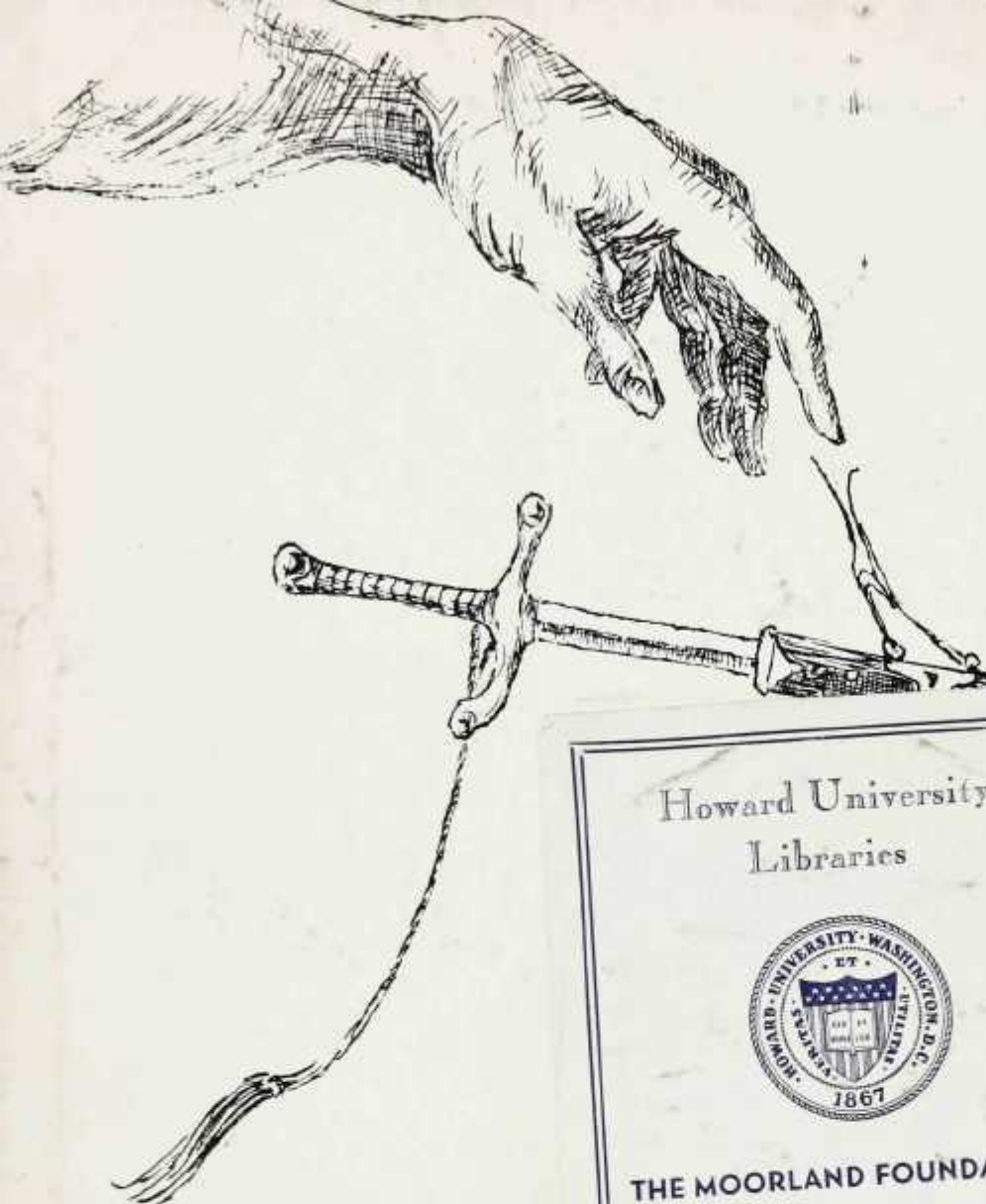
Howard University, "The Bison: 1947" (1947). *Howard University Yearbooks*. 117.
https://dh.howard.edu/bison_yearbooks/117

This Yearbook is brought to you for free and open access by Digital Howard @ Howard University. It has been accepted for inclusion in Howard University Yearbooks by an authorized administrator of Digital Howard @ Howard University. For more information, please contact digitalservices@howard.edu.



LISON

19
47



Howard University
Libraries



THE MOORLAND FOUNDATION

Gift of

Accession No. 188851

Class M 578^H u

Book H 834

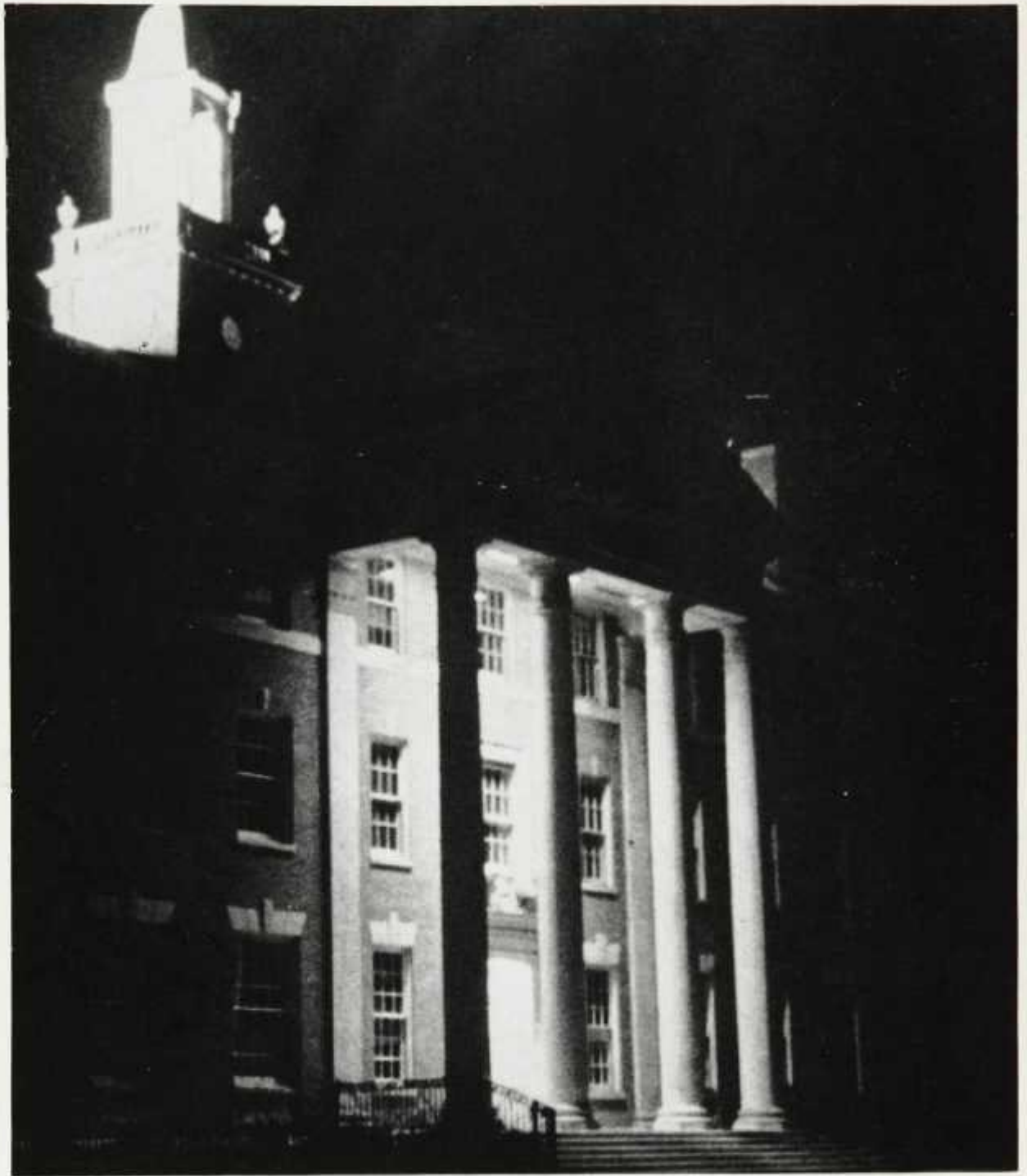


188851

H
M 3784
H 834

80 *years ago a group of men of principle
and vision founded our university . . .*





PUBLISHED BY THE SENIOR CLASS
HOWARD UNIVERSITY
WASHINGTON D. C.



THE 1947

Bison

FOREWORD

*Blithe comrades, oh clasp tight
The memory of all the swellings of delight that filled
our hearts*

*When first we viewed our Howard, set upon a hill;
Tall columns and white spires glistening in the soft sun-
light of our first freshman day.*

*What splendor did we breathe down long green ways,
A-tingle with the verdant scents of youth and growing
things.*

*What tenderness throbbed in us at the Library's low bell,
That spoke day's ending, the setting of the sun.
Each day then has helped to fill the cup:*

*Blue moments of a sophomore's day,
A disappointed tear, a last farewell to shattered dreams;
New visions for the Junior, laughing as he threw away
his toys*

*And shielded his eyes to see the sunrise almost overhead;
Our days as seniors—sweet, uncertain, yet secure.*

*We look often and clasp hard the hands of friends
Who soon must take their liting love of life far from us,
Leaving only memories, but memories so fond they blur
the vision*

*With sweetness that will linger long beyond our talent
to recall.*



DEDICATION

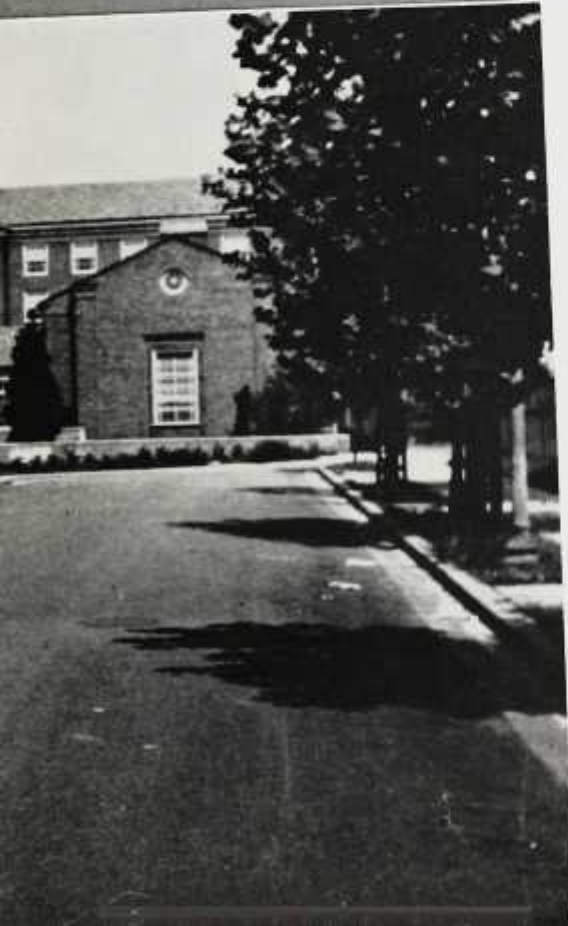
The Spirit of '47 . . . vital, indomitable . . . has survived the crisis of national turbulence, the loss of many fine sons, and the vicissitudes of an uneasy peace . . . propelling us ever onward to our goal. To this inspiring force, endowed with life and blood by our very devotion, . . . we gratefully dedicate our yearbook.



THEY HOUSE OUR PLANS FOR



FUTURES IN MANY FIELDS



English

History

Psychology

Mathematics

Physics

German

Chemistry

Political Science

Commerce

Sociology

Latin

Humanities

Engineering

Botany

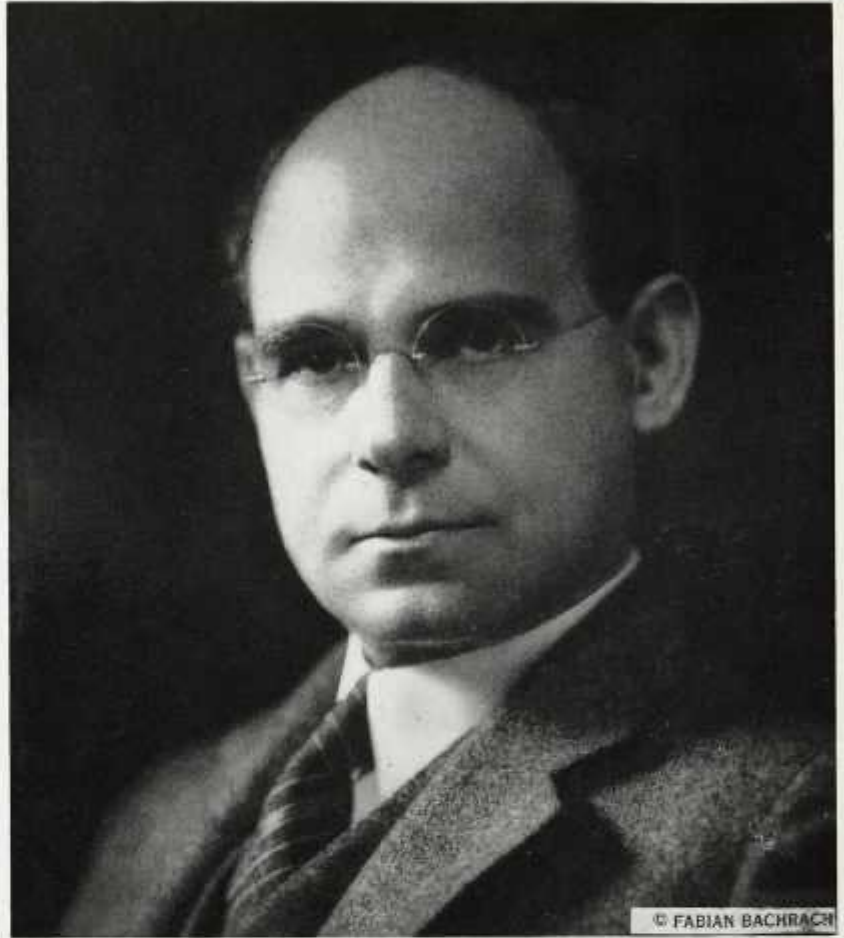
Art

Medicine

Zoology

OUR PROGRESS IS DUE TO

DR. MORDECAI WYATT
JOHNSON
President



Dr. Mordecai Wyatt Johnson, affectionately known as "Mordecai" by the student body, has been the living symbol of Howard University to us ever since the first day we met him in Chapel in our freshman year. From that time on, we have looked to him for inspiration and leadership, and have recognized him as the "benevolent guardian" of the Howard Family. Under his direction, Howard has become a guiding force in moulding today's youth into tomorrow's citizens.

THEIR CONSTANT EFFORTS

DEAN ST. CLAIRE PRICE

A man of intellectual acumen and of administrative greatness who has brought to the Dean's office in the College of Liberal Arts a quiet degree of efficiency. His stoic background has given him a meditative calm when disruptive student problems burst like rockets in the Collegic community.

MR. CARROLL MILLER

Graduate of Howard University who after being recalled as an instructor of Education has served as liason officer and counselor until now he is Assistant Dean of the College of Liberal Arts. His is the gift of meditative advice.



DEAN LEWIS DOWNING

An expert in his field. One of the few Negroes with an M.S. in C.E. from M.I.T. He has poured much time and thought into the creation of an Engineering and Architecture School full of potential wizards.

DR. WALTER G. DANIEL

He grew up on Virginia Union's campus. Came to Howard while still young. Here he has given unselfishly of his time and energy to the student body. He has also filled well his rank as librarian and full Professor of Education.

DEAN WARNER LAWSON

He has carried the laurel wreath of musical creativity well throughout the entire nation. Here he has created a choir of unquestioned greatness and a music school of top rank rating.



WITH THEIR AID, WE ARE NOW



**REGISTRAR
FREDERICK D. WILKINSON**

An attorney whose good spirits and congeniality mixed with his shrewd make-up has made the Registrar's Office the efficient fountain-head of marks, facts, and figures that it is.

MISS SUSIE A. ELLIOTT

Much of the credit for the amenity and gentility characteristic of Howard women may go to Miss Susie A. Elliott, Dean of Women. She has been a living example of the rules and regulations governing finer living.

DEAN WILLIAM B. WEST

Finished Colby College and went into YMCA work in New York. He was brought to Howard as a "Y" secretary to stay one year and has remained as the amiable father of the men of the school for twenty-five years.



MISS LOUISE LATHAM

Assistant dean of women Miss Louise M. Latham has served in countless ways to promote fellowship, high scholastic standards, and in general a program embracing the quality of finer womanhood among the female students of Howard University.

MISS MYRTLE GRAYES

Miss Myrtle Grayes, in charge of off-campus girls and their activities, is responsible for the cheery greeting you receive on entering the office of the Dean of Women.



the Seniors



SENIOR CLASS OFFICERS



HENRY HOUZE
President



JEAN BARBEE
Vice-President

WILLADINE GRINNAGE
Treasurer

DORIS ARMSTRONG
Secretary

GRETCHEN JONES
Corresponding Secretary



THE BISON EDITORS

WILLIAM H. COLLIER
Editor in Chief



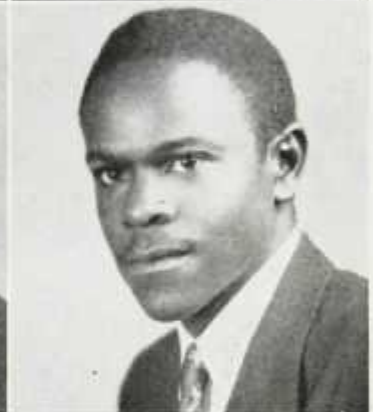
MYRA G. BALL
Art and Makeup

WALLETTE C. BOLDEN
Feature Editor



KATHERINE J. KEARNEY
Photography Editor

THEODORE BELL
Business Manager



JAMES BOOKER
Sports Editor

PATRICIA SHAW
Associate Editor



ERNESTINE KEMP
Assistant Editor

GLORIA MARIE ALLEN
New York City, New York

PSYCHOLOGY

House Government; Psychology Club; Class Financial Committee Member.

"Doc" . . . has fond memories of freshman year . . . looks forward to becoming a doctor . . . likes all sports and reading . . . dislikes snobs . . . a good sport.

WILLIAM HENRY ALLEN, JR.
Philadelphia, Pennsylvania

ECONOMICS

Economics Club.

"Billy" . . . a versatile, intelligent and understanding gent . . . likes music . . . dislikes the Republican Party . . . will always remember his four years at Howard . . . favorite prof. is Dr. Abram Harris . . . aiming to become a professor at Howard University.

FREDDIE MAE ANDERSON
Gary, Indiana

COMMERCE

Commerce Club; Economics Club; Wesley Foundation; N.A.A.C.P.; Spanish Club.

"Mickey" . . . quiet and studious likes to sew in her leisure time . . . plans to become an accountant.



SARAH L. ANDERSON
Hinton, West Virginia

SOCIOLOGY

F.T.A.; Women's League.

"Sla" . . . hates 8 o'clock classes . . . likes biking and swimming . . . favorite memory is the May Festival . . . favorite prof. is Dr. Frazier . . . plans to be a Medical social worker.

VIVIAN ANDUZE
Washington, D. C.

HISTORY

Pleasant . . .

DORIS ELOISE ARMSTRONG
Akron, Ohio

PSYCHOLOGY

Senior Class Secretary; N.A.A.C.P. Treasurer; Modern Dance Club President; Tutorial Staff; Bison Staff; French Club; Hilltop Staff; Senior Mentor; Psychology Club; Dean's Honor Roll; F.T.A.

Regular, playful and intelligent . . . fond of sports . . . dislikes artificiality in people . . . will always remember representing Howard at the N.A.A.C.P. Eighth Annual Youth Conference in New Orleans.

CAROLYN ASHE

Philadelphia, Pennsylvania
DELTA SIGMA THETA
Howard Players; Fellowship Council.

Some folks call Carolyn "the brat", but she's sweeter than a brat could be . . . a quiet smile, an even disposition help contribute to her many friends and to the organizations to which she belongs . . . her favorite memory is coming off pro for Delta Sigma Theta Sorority.

MURIEL E. AVERY

Middletown, New Jersey
ALPHA KAPPA ALPHA SOCIOLOGY
House Government; N.A.A.C.P.; Fellowship Council; U.N.

"Put" . . . likes pinochle, ping-pong, and P.J. . . . dislikes parasites . . . has fond memories of Med. and Dent. School dances and her rendezvous . . . will be successful in the field of Social Work . . . an epicurean philosopher.

ROBERT LOUIS S. BAIRD

Georgetown, British Guiana
ZOOLOGY
Caribbean Association.

"Sonny" . . . as frank and determined as they come; plain spoken along with his frankness . . . persons who click their teeth while chewing gum really get on his nerves . . . his favorite prof. is Dr. Hansborough . . . plans to go into the field of medicine.



MYRA BALL

Bronx, New York
ALPHA KAPPA ALPHA ART
Senior Mentor; U.N.; Fellowship Council.

"Meatball" . . . catty and mischievous . . . likes food and she does mean good food . . . spends most of her free time in the movies and playing pinochle . . . dislikes the cafeteria food and hypocrites . . . her favorite prof. is Mr. Wells . . . plans to become a costume designer.

JEANNE BARBEE

Buffalo, New York
PSYCHOLOGY
Newman Club President; Class Vice-President of '47; N.A.A.C.P.; House Government; U.N.; French Club; Howard Players.

Called by her friends "Rain" and "Brillo" . . . a charming personality, demure in stature and twice her quota in pep . . . dislikes dirty fingernails and non-dancers . . . favorite prof. is Dr. Hansborough . . . plans to go into Medicine.

JAMES MONROE BARNES, III

Washington, D. C.
KAPPA ALPHA PSI POLITICAL SCIENCE

"Wimpy" . . . plans to study Law . . . hobby is tennis . . . favorite profs. are Mrs. Wormley and Dr. Browne.

EVELYNE E. BARNETT

Atlantic City, N. J.

PSYCHOLOGY

Cheerleader; N.A.A.C.P.; Canterbury Club.

"Barney" . . . naive, "heavy," vivacious, alert, and active . . . graduating in three years . . . pet peeve is waiting in lines . . . dormitory hen sessions are favorite memories . . . working hard to get Psi Chi on the campus . . . favorite prof. is Dr. Sumner . . . she plans to be a clinical psychologist.

WILHELMENA I. BARNETT

Louisville, Kentucky

HISTORY

Reticent, soft spoken . . . likes movies and reading . . . she plans to become a teacher.

ALFREDA VICTORIA BARTLEY

Jacksonville, Florida

ALPHA KAPPA ALPHA MATHEMATICS
N.A.A.C.P.; Commerce Club; German Club; Wesley Foundation; Women's League.

"Freda" . . . unassuming, co-operative, sincere . . . her pet peeve is standing in line . . . is still reminiscing about Summer School of 1946 . . . likes to read.



LLYOD A. MICHAEL BARYORH

Segbeveima, Sierra Leone.

West Africa

African Students Association President; Howard International Club.

"Mike" . . . friendly, interesting, serious, reliable, quiet . . . fond of reading and likes to collect stamps and interesting newspaper articles . . . favorite memory, University Chapel Services . . . favorite prof. is Dr. L. A. Hansborough . . . planning for a medical career.

ESSIE B. BAYLOR

Washington, D. C.

ENGLISH

F.T.A. Corresponding Secretary.

"Skena" . . . lively, happy-go-lucky, loquacious . . . dislikes loud talkers on trolleys and in other public places . . . likes to collect records and picture post cards, reading and dancing . . . among favorite memories is Spring Formal at Va. State College, 1944 . . . favorite prof. is Dr. Taylor . . . plans to teach English.

ROBERT F. BELL

Philadelphia, Pennsylvania

OMEGA PSI PHI POLITICAL SCIENCE
Men's Dormitory Council; Farsity H. Club; Football Team; Track Team Mgr.

"Skip" . . . truly "great" . . . likes football, track . . . pet peeve is conflict in class schedules for seniors . . . favorite memory, being discharged from army . . . favorite prof. is Dr. Brown . . . greatest ambition is to become a lawyer.

THEODORE L. BELL

West Palm Beach, Florida

ALPHA PHI ALPHA CHEMISTRY
Alpha Phi Alpha, Financial Secretary; A.P.C. Treasurer; Chemistry Club; Social Committee Chairman, Class of '47.

"Teddy" . . . friendly and ambitious . . . fond of dancing . . . favorite memory is the day of his discharge from the Army . . . favorite prof. . . Frank Coleman . . . plans to enter the medical field.

JACQUELINE E. BERRY

Philadelphia, Pennsylvania

PHYSICAL EDUCATION
"Jackie B" . . . always full of fun, kind and trustworthy . . . just adores talking, reading and participating in sports . . . will always remember her college days . . . greatest ambition to become a teacher of physical education.

EUNICE O. BLAKELEY

Washington, D. C.

ENGLISH

E.T.A.
Eunice . . . diligent . . . taciturn . . . enjoys playing the piano . . . favorite prof. is Prof. Davis.



WALLETHE BOLDEN

New York City, New York

DELTA SIGMA THETA PSYCHOLOGY
Delta Sigma Theta President; Kappa Mu, Mentor; Howard Players Vice-President; Bison Feature Editor; Student Faculty Committee; Student Council; Women's League (Junior year); Who's Who in American Colleges and Universities; Dean's Honor Roll.

"Wally" . . . a superb and delightful personality and loved by all . . . with her outstanding personality, she will do well as a psychiatric social worker.

JAMES E. BOOKER

Riverhead, New York

COMMERCE AND FINANCE
Varsity H. Club; N.A.A.C.P.; Kappa Sigma Debating Society Vice-President; Commerce Club Vice-President; Hilltop and Bison Sports Editor

"Jimmy" . . . friendly and courteous . . . likes all sports . . . dislikes people who talk a lot . . . favorite prof. is Mr. Dorsey . . . plans to go into the market business.

NAOMI JEAN BOOTH

Detroit, Michigan

ALPHA KAPPA ALPHA PSYCHOLOGY
Le Cercle Français; Chess Club; Psychology Club.

"Jean" . . . full of energy, studious, a friend to all who know her . . . pet peeve is silly gossip . . . Naomi says that all her professors were "great" . . . plans to fulfill her destiny as a Clinical Psychologist.



VERA BRANKER
 Boston, Massachusetts
 DELTA SIGMA THETA MATHEMATICS
Fellowship Council, Ass. Ed.
 "Lanky" . . . our pert little red-head from Boston who looks as if she swims but hates the water . . . favorite hobbies are tennis and bike-riding . . . favorite memory is the night she came off pro for Delta Sigma Theta Sorority . . . pet peeve is Bilbo . . . favorite prof. is Dr. Snowden . . . Vera aspires to be an actuary accountant.

CARILYN BUTLER BROWN
 Washington, D. C.
 DELTA SIGMA THETA PSYCHOLOGY
Hilltop Assistant Editor; Canterbury Club; Fellowship Council; Psi Chi.
 Dynamic, effervescent, amiable . . . plans to become a medical social worker . . . her pet aversion is fig newtons, and bugs unnerve her . . . favorite memory was being the Omega Sweetheart . . . well known as the girl with the flowing tresses.



JULIAN B. P. BRERETON
 Boston, Massachusetts
 OMEGA PSI PHI
 COMMERCE AND FINANCE
Commerce Club President; Howard Players; Tutorial Staff.
 "Pete" . . . pleasingly conservative, the "executive type" . . . has as hobbies, reading, movies, and dramatics . . . filling his pockets at a dance with Milady's personal effects is his pet peeve . . . favorite profs. are H. Naylor Fitzbugh and Dr. Snowden . . . awarded Honor Certificate from Commerce Department of Howard University.

JUANITA BROWN
 Elyria, Ohio
 PUBLIC SCHOOL MUSIC
Band, Orchestra, Phi Alpha Nu Musical Society, Wesley Foundation.
 "J.B." . . . good-natured, conscientious, and talented . . . likes art, reading, and embroidery . . . dislikes snobbishness and skiving . . . "J.B." will always remember the University Band of '43 . . . her favorite instructor is Mr. C. C. Cohen.



ESSIE BROOKS
 Washington, D. C.
 MATHEMATICS
F.T.A. Assistant Secretary.
 Pleasant, energetic . . . a friend to all . . . likes to skate, read, and bike ride . . . aspires to be a teacher . . . dislikes people who chew gum continuously . . . favorite prof. . . Dr. Blackwell.

ALTHEA ODELL BYRD
 Buffalo, New York
 DIETETICS
Home Economics Club; Bison Staff.
 "Jezebel" . . . well dressed, popular, and cheerful . . . likes movies, and playing badminton . . . pet peeve—no standard course in dietetics until her senior year . . . Jezebel will always remember the campus on a spring morning . . . likes Mrs. Artie Bell . . . intends to go into the field of dietetics.





BARBARA JEAN CALDWELL
Topeka, Kansas

MATHEMATICS
Der Deutsche Verein Corresponding Secretary.
"Barb" . . . a kind and confident person . . . her hobbies are playing tennis and bowling . . . has no respect for people who tell her something she has just told them . . . she plans to become a mathematician or statistician.



JEWEL CALIVER
Washington, D. C.

HOME ECONOMICS
Home Economics Club; Spanish Club.
Is likeable, sincere, reserved . . . likes to read and collect post cards . . . will always remember her freshman days . . . favorite prof. is Dr. Kittrell . . . hopes to have a Nursery School someday.



DORIS L. CARSON
Washington, D. C.

DELTA SIGMA THETA **SOCIOLOGY**
Bison Staff.
Likes the modern dance, photography, scrapbooks, and reading . . . pet peeve is her nickname . . . Doris plans to go into the field of Social Work.

BEVERLY JANE CHANDLER
Chicago, Illinois

PSYCHOLOGY
N.A.A.C.P. President; House Government; Hilltop Staff; Bison Staff; Fellowship Council.
"Boo" . . . her air, her manner, all who see admire . . . admires simplicity . . . dislikes prevarication . . . favorite memory of Howard is the serenading of the boys in front of the dorm . . . plans to become a Legal Psychology Worker.

J. EDWARD CHARITY
Detroit, Michigan

ECONOMICS
Economics Club; Commerce Club; N.A.A.C.P.; Howard Chapter of A. Y. D. United Nations Organization.
"Charity" . . . likes music and tennis . . . favorite prof. is Prof. Abram L. Harris . . . plans to be an economist and hopes to return someday to Howard to teach.

F. RUSSELL CHARLES

ALPHA PHI ALPHA **ZOOLOGY**
A quiet and friendly guy . . . will remember probation.



ROBERT NATHANIEL CHASE
 Philadelphia, Pennsylvania
 OMEGA PSI PHI ZOOLOGY
*Hilltop; Canterbury Club;
 N.A.A.C.P.; Fellowship Council.*
 "Chase" . . . quiet, reserved, coop-
 erative . . . interested in Negro His-
 tory . . . pet peeve is the Pan Hel-
 lenic Council . . . favorite prof. is
 Mrs. Wormley . . . plans to be a
 Mortician.

JANET CHILDS
 New York City, New York
 PSYCHOLOGY
Choir; Howard Players.
 "J.C." . . . friendly, enthusiastic
 . . . plans to be a vocational coun-
 selor . . . likes music and dramatics
 . . . favorite memory is May Day
 Festivals . . . favorite profs. are Dr.
 Cooke and Dean Lawson.

ROBERT L. CLARK
 Chattanooga, Tennessee
 PSYCHOLOGY
 "Bob" . . . friendly . . . will always
 remember the Student Council
 dance of '43 . . . Mrs. Margaret
 Wormley is his favorite instructor
 . . . plans to become a Psychiatrist.



WILHELMINA O. CLARKE
 Tuskegee Inst., Alabama
 DELTA SIGMA THETA
 PHYSICAL EDUCATION
H.A.A.; Modern Dance Club.
 "Toni" . . . friendly, easy-going,
 musical, vivacious, versatile, de-
 pendable . . . favorite prof. is Mrs.
 Bracey . . . intends to establish a
 dance studio.

DORIS JEAN CLEMMONS
 Washington, D. C.
 SOCIOLOGY
 Sincere, friendly, sweet . . . fond of
 good books and good music . . .
 likes genuineness in people . . . will
 always remember the freshmen and
 senior years at Howard University
 . . . favorite professors are Dr.
 Holmes and Dr. Frazier.

ISABELLE M. COLEMAN
 New York City, New York
 SOCIOLOGY
Commerce Club.
 "Izzy" . . . congenial, dependable,
 trustworthy . . . likes pinocle,
 dancing . . . dislikes people trying
 to be what they are not . . . will
 always remember the pranks played
 in the dormitory her freshman year
 on Sara Slack . . . likes Miss Perry's
 classes . . . greatest ambition is to
 become a social worker.

AUDREY COLES

Washington, D. C.

Quiet and shy . . . Admired by many.

JOSEPH CARLYLE COLES, JR.

Washington, D. C.

POLITICAL SCIENCE

Wesley Foundation; Men's Bible Study Group.

A deep thinker . . . likes movies, reading and football . . . he will always remember the Howard vs. Lincoln football game of '46 . . . is irritated when people try to read over his shoulder. Mr. Emmett E. Dorsey is his favorite teacher . . . plans to go into the field of Ministry.

WILLIAM HAROLD COLLIER

Newark, New Jersey

ALPHA PHI ALPHA PSYCHOLOGY

Howard Players President; Kappa Sigma President; Tutorial Staff Chairman; Student Faculty Committee; U.N.O.; A.F.C.; N.A.A.C.P.; German Club; Hilltop Business Manager; Stylus Committee on S.A. Who's Who; Bison Editor.

"Bill", "Colley" . . . a sincere energetic fellow with high ideals and ambitions . . . likes books, football, and riding.



CHARLES COLLINS

Norfolk, Virginia

OMEGA PSI PHI, BASILEUS

ZOOLOGY

"Chick" . . . friendly, well dressed and cheerful . . . likes to collect records . . . pet peeve is sarcasm, ridicule, and segregation . . . favorite memory is Honorable Discharge from U. S. Army . . . favorite prof. is Dr. Hansberry.

WALTER COLSON

Ahoskel, North Carolina

CHEMISTRY

N.A.A.C.P.; Fellowship Council; Sphinx.

"Walt" . . . a comic if there was one . . . just plain loud that's all . . . will make a very good Doctor.

LOUISE ALYCE COLVIN

Trenton, New Jersey

SOCIOLOGY

Modern Dance Club Vice-President; W.A.A.; N.A.A.C.P.; Wesley Foundation Club; Bison Staff; Senior Mentor; Women's League.

"Weenie" . . . efficient, energetic, and friendly . . . likes dancing, playing cards and eating . . . pet peeve is missing breakfast . . . will always remember the good old dormitory life . . . favorite prof. is Dr. Einar.



J. ALPHONSO S. CORBIN
Pulaski, Virginia
OMEGA PSI PHI

CHEMISTRY AND ZOOLOGY
"Showboat" . . . dynamic and friendly . . . upholds the law in believing that all people are innocent until proven guilty . . . likes poetry and classical music . . . dislikes people after "note" . . . his favorite prof. is Dr. Barnes . . . plans to go into the field of Medicine.



MARIE COTTEN
Washington, D. C.
LATIN

Kappa Mu; German Club.
"Toni" . . . an ideal friend and a great lover of the classics . . . an exceptional student and intends to study in Rome in the near future . . . likes tennis, dancing and music . . . her first year at Howard is her favorite memory . . . favorite prof. is Dr. Frank Snowden.



GEORGE P. CUNNINGHAM
Georgetown, British Guiana
ZOOLOGY

Caribbean Association.
Radical . . . scholarly ways are his only claim to virtue . . . favorite prof. is Dr. Hansborough . . . plans to study medicine likes to play cricket.

JEAN FLOUSE CURL
Dallas, Texas

ALPHA KAPPA ALPHA MATHEMATICS
U.N.O.; Die deutsche Verein;
N.A.A.C.P.; Women's League.
Conscientious, amiable, energetic . . . you haven't been seeing double there are two of her . . . likes to collect photographs . . . favorite prof. is Dr. N. W. Woodward.

JOAN LOUISE CURL

ALPHA KAPPA ALPHA MATHEMATICS
U.N.O.; Die deutsche Verein;
N.A.A.C.P.; Women's League.
One of the twins . . . persevering, likeable, dependable, as big as a minute . . . favorite prof. is Dr. Branson.

GERTRUDE DANIELS

Corona, Long Island, New York
ALPHA KAPPA ALPHA SOCIOLOGY
Fellowship Council; Women's League; Howard Players;
N.A.A.C.P.
"Trudy" . . . spirited, aggressive, mischievous, and likes the out-of-doors . . . likes dancing, swimming, and taking pictures . . . dislikes getting up in the morning . . . favorite prof. is Mr. Dorsey.





HENRY ETTA K. DAVENPORT
McKeesport, Pennsylvania
HOMI ECONOMICS
Home Economics Club; Spanish Club; N.A.A.C.P.
"H.K." . . . affable, fun loving . . . will never forget walking to class while the clock is striking . . . she gets great enjoyment from traveling and interior decorating . . . "H.K." plans to enter Freedmen's Hospital for dietetics training . . . likes to remember the Chapel Sunday morning services.

PHYLLIS DAVIS
Philadelphia, Pennsylvania
HISTORY
U.N.O. Secretary.
"Phil" . . . friendly, vivacious, congenial . . . favorite saying is "if I can just pass this exam I'll study every night from now on" . . . fond of going to the movies . . . will always remember playing hockey in December . . . pet peeve is the failure to return exam papers . . . favorite prof. is Dr. R. W. Logan . . . plans to be a teacher . . . lucky girl! . . . married her dream man in her senior year.



JEANNE E. DAVIS
Washington, D. C.
PHYSICAL EDUCATION
Dance Club Treasurer; F.T.A.; W.A.A. Treasurer.
"Teenie" . . . provokish, agreeable, witty . . . likes reading, camping . . . pet peeve is eight o'clock classes . . . favorite memory is May Festivals . . . favorite prof. is Dr. Tulane . . . will make an excellent instructor in Physical Education.

ETHEL B. DELANEY
Roselle, New Jersey
ALPHA KAPPA ALPHA PSYCHOLOGY
W.A.A.; N.A.A.C.P.; Dean's Honor Roll; Fellowship Council; Wesley Foundation; French Club; House Government Treasurer; Bison Staff Finance Committee.
"D" . . . reserved, her fascinating radiance is unique in all of it's entirety . . . spends most of her free time writing letters, and reading . . . "D", a transfer student from Talladega College plans to become a Psychiatric Social Worker.



MARION (GREENE) DAVIS
Atlantic City, New Jersey
PHYSICAL EDUCATION
Pyramid Club; W.A.A.; F.T.A.; N.A.A.C.P. Modern Dance Club; Women's League; Canterbury Club; Varsity Hockey Team.
"Greenie" . . . energetic, jolly, and an ideal friend . . . likes swimming and field hockey . . . dislikes eight o'clock classes . . . favorite memory is Dec. 21, 1945 . . . favorite prof. is Mrs. Maryrose Allen . . . will make an excellent Physical Education Instructor.

ROSE DE MOUY
Alexandria, Louisiana
PSYCHOLOGY
Howard Players; Bison; University Assembly Staff.
Rose . . . pretty, lovable, attractive . . . fond of music, riding, and sewing . . . dislikes affected people, early classes, or appointments . . . will always remember the campus at night, in the spring, and after snowfall . . . favorite prof. is Dr. Frank Snowden . . . plans to be a Clinical Psychologist.



MURIEL BEASLEY DENNISTON

Washington, D. C.

DELTA SIGMA THETA

POLITICAL SCIENCE

Glee Club; Political Science Club.
Attends Law School . . . reticent
. . . pet dislike—8 o'clock classes . . .
favorite professor is Mr. Dorsey
. . . favorite memory is being on
"pro" in autumn '43.

HERBERT DIXON

JEAN DREW

Hartford, Connecticut

DELTA SIGMA THETA

POLITICAL SCIENCE

Class Secretary; N.A.A.C.P. Corresponding Secretary; Fellowship Council Recording Secretary; "Kappa Sweetheart"; Kappa Sigma; House Government; Mentor.
"Droopy" . . . nonchalant, outspoken, truthful, sincere . . . likes piano, reading and photo tinting . . . dislikes the nickname "Jeanie"; Bilbo, and raisins . . . favorite profs. are Dr. Branson, Dr. Dorsey, and Dr. Snowden.



WANDA RITA DRUMMOND

New York, New York

SOCIOLOGY

Fellowship Council, Bison Staff.
"Rit" . . . vivacious, voguish, versatile . . . likes to play tennis and dance (with Lyle) . . . dislikes standing in lines . . . plans to become a wife (Lyle's) . . . nice figure.

DORIS C. DURRAH

Plainfield, New Jersey

SOCIOLOGY

Witty, humorous, and a great philosopher . . . likes to meet people . . . enjoys reading poetry and playing tennis . . . fond of good plays and musicals . . . dislikes rude people . . . favorite prof. is Dr. Eugene Holmes . . . plans to be a Medical Social Worker.

EPHRAIM ZENO EDWARDS

Casteus, St. Lucia

British West Indies

CHEMISTRY

Caribbean Club Treasurer; Lumpadas; Newman Club.
"Patachou" . . . friendly, serious . . . a stamp collector . . . will always remember the University Chapel Services . . . desires better understanding between foreign and American students . . . favorite prof. is Dr. Snowden . . . plans to become a doctor.

ARETHA EDWARDS

Brentwood, Maryland

SIGMA GAMMA RHO SOCIOLOGY
F.T.A.

A good mixer with an inexhaustible supply of energy . . . likes to collect records . . . favorite memory is spring at Howard . . . favorite prof. . . Dr. Frank Snowden . . . plans to go into the field of Social Work.

PAULINE L. ELLIS

Washington, D. C.

SOCIOLOGY

"Paula" . . . sincere, serious . . . likes to collect stamps . . . dislikes crowds . . . favorite prof. is Dr. Eugene Holmes . . . plans to go into Child Welfare Work.

A. LAURAYNE FARRAR

Bridgeport, Connecticut

CLOTHING

F.T.A.
"Rene" . . . a likeable person who adores traveling and meeting people . . . finds pleasure in sewing . . . pet peeve is Pseudoism . . . favorite prof. is Dr. Knox . . . greatest ambition is to become a costume designer.



GEORGE A. FERGUSON, JR.

Washington, D. C.

PHYSICS

Varsity Swimming Team, "Bump" . . . quiet, reserved . . . dislikes red tape and long lines . . . likes radio repairing and swimming . . . his favorite prof. is Dr. Branson.

JUNE LORRAINE FLIPPIN

Rutherford, New Jersey

DELTA SIGMA THETA SOCIOLOGY
Fellowship Council; Senior Mentor; W.A.A.; N.A.A.C.P.; House Government; Modern Dance Club; Spanish Club; A.V.C.; Bison Staff.

"Flip" . . . a perfect lady, with a very charming manner . . . likes all types of active sports . . . dislikes those who claim to know all but know nothing . . . favorite memory is freshmen year . . . favorite prof. is Dr. Branson . . . the perfect one for Social Work activities.

LESTER C. FLORANT

ALPHA PHI ALPHA

PHYSICS

Class President and Treasurer; Hilltop Business Manager; Beta Chapter Alpha Phi Alpha Financial Secretary; Chess Club.

"Les" . . . poised, mind of a slide rule, and personality of a generator, friendly, dependable . . . God's gift to a few lucky women . . . his favorite smoke dream is the Alpha Coronation Ball in '43 when Dot Steele wore the regal garments.



CLIFTON FOWLER

Washington, D. C.

KAPPA ALPHA PSI

BUSINESS ADMINISTRATION

Commerce Club.

"Cliff" . . . amicable, studious, courteous . . . fond of swimming, basketball, tennis, and photography . . . dislikes cold weather . . . favorite prof. is Mr. James Washington . . . plans to enter the Business field.



WILLIAM LEON GARDNER, JR.

New York, New York

ENGLISH

Hilltop Feature Writer; *Le Circle Francais*; *Class Historian*; *Styles Club*; *A.F.C.*; *Bison*.

"Guillaume" . . . dynamic, an electric charge with extraordinary wit . . . the World is his fraternity . . . likes reading novels with European background . . . will always remember Dean Thurman's Sermons . . . dislikes long assignments and final examination.



FLORENCE A. GEORGE

New York, New York

SPANISH

Circulo Cervantes.

"Flo" . . . energetic . . . vivacious . . . an ardent lover of all things Latin . . . hobbies are Latin American dancing and dramatics . . . favorite memory is her first Latin American Recital . . . favorite prof. is Dr. Spratlin . . . has spent a great deal of time entertaining in N. Y., N. J., Conn., Wash., by dancing, singing.

FERNE MARIE GEORGES

Philadelphia, Pennsylvania

DELTA SIGMA THETA PSYCHOLOGY

"Little Flower" . . . quiet, soft-spoken, easy-going . . . fond of art work . . . pet peeve is chemistry lab periods . . . favorite prof. is Dr. Hansborough . . . plans to enter the field of Medicine.

HERMAN GIBSON

Flint, Michigan

KAPPA ALPHA PSI, POLEMARCH

POLITICAL SCIENCE

Kappa Sigma; *Howard Players*; *N.A.A.C.P.*; *Fellowship Council*; *U.N.*; *Tutorial Staff*; *M.D.C.*; *Varsity H.*; *A.F.C.*; *Hilltop Staff*; *Student Faculty Committee*; *Political Science Club*; *Chess Club*; *Bison Staff*; *Dean's Honor Roll*.

"Scrouge" . . . likes sports and chess . . . his pet peeve is beautiful ladies who do not know the essence of beauty.

FAYE L. GOGGINS

Akron, Ohio

ALPHA KAPPA ALPHA ART

Dauber's Club; *N.A.A.C.P.*; *House Government President*; *Student Council*; *Bison Staff*.

"Phaedra" . . . demure, charming, and refreshing as a spring breeze . . . likes reading and sketching . . . dislikes soft boiled eggs . . . plans to become a commercial designer.





ORGRETTE B. GRAHAM
Tulsa, Oklahoma

POLITICAL SCIENCE
Basketball Team.
"Cookie" . . . smooth, the most handsome boy in the class . . . he was most outstanding on the basketball team in '46 . . . plans to go into law.



GLADYS M. GRAY
Washington, D. C.

ALPHA KAPPA ALPHA
PHYSICAL EDUCATION
W.A.A.; Modern Dance Club.
. . . frank, jovial, temperamental . . . likes reading, and dancing . . . can not stand cold water . . . will always remember probation . . . her favorite profs. are Mr. Burr and Dr. Knox . . . plans to teach.



ETTA GREEN

Pre-Med
A quiet, dignified young lady . . . will make a fine doctor.

WILLIAM E. GREENE, JR.
Norfolk, Virginia

OMEGA PSI PHI CHEMISTRY
Student Council President; M.D.C. President; Omega Psi Phi Vice Basilus; Dean of Pledges; Fellowship Council; Who's Who; Tutorial Staff; N.A.A.C.P.; Hilltop Staff; Bison Staff.
"Bill" . . . thinker, rather quiet at times, energetic, ambitious . . . likes basketball, track, tennis, reading, and chemical experiments . . . dislikes conceited persons.

ALBERTA GREGG
Glenaim, Maryland

ALPHA KAPPA ALPHA ENGLISH
F.T.A. President; U.N.O. Corresponding Secretary; Bison Staff; Senior Mentor; Hilltop.
"Bert" . . . quiet, efficient, cooperative, sincere, and studious . . . fond of music and the movies . . . will make an excellent teacher . . . favorite profs. are Dr. Lotton and Dr. Snowden . . . recipient of Kappa Cup.

EUGENIA MAE GREGORY
Glen Cove, Long Island, New York

FRENCH
Wesley Foundation; F.T.A.; W.A.A.; French Club.
"Genie" . . . studious, likeable, and pleasant . . . likes reading, swimming, and dancing . . . detests people who crack chewing gum, especially in the movies . . . favorite prof. is Dr. Mercer Cook . . . "Genie" plans to teach.



WILLADINE M. GRINNAGE

Philadelphia, Pennsylvania

DELTA SIGMA THETA **ENGLISH**
Howard Players; Fellowship Council; Canterbury Club; Kappa Mu; F.T.A.; Dean of Pledges of Sorority; Class Treasurer; Bison Staff.

"Willy" . . . like a quiet walk through a shaded forest path with intermittent patches of sunshine . . . pet peeve, dormitory matrons . . . loves dramatics and badminton . . . wants to teach.

MILDRED ELISE GUENVEUR

Charlestown, South Carolina

DELTA SIGMA THETA **ART**
Daubers Art Club; Howard Players. "Millie" . . . pretty, regular, all who know her love her . . . likes to paint and play ping pong . . . pet peeve is "eager beaver" . . . favorite memory is serenading around "the tree" . . . favorite prof. is Mr. J. A. Porter.

RICHARD H. GUESS

Houston, Texas

ALPHA PHI ALPHA **PSYCHOLOGY**
Fellowship Council; Chemistry Club; Le Cercle Francais. "Rick" . . . takes things as they come . . . dislikes pretentiousness . . . has a profound adoration for beautiful girls with "mixing" personalities . . . a dentist in the making.



ALMA JANE HALE

Colorado Springs, Colorado

ALPHA KAPPA ALPHA **ENGLISH**
Howard Players; House Government; Newman Club.

"Butch" . . . Langston University's gift to Howard in our junior year . . . a charming girl with a great deal of controlled effervescence . . . likes reading and biking . . . dislikes affectations . . . plans to write "The Great American Novel."

LOVEY JEWEL HAMMOND

Byran, Texas

ALPHA KAPPA ALPHA **PIANO**
N.A.A.C.P. Publicity Manager; A.K.A. Treasurer; Pi Alpha Nu Musical Society; Fellowship Council; Newman Club.

"Lovely" . . . well-liked, sincere, well-poised, day-dreamer . . . likes horse-back riding, reading, and listening to records . . . dislikes cafeteria lines . . . will always remember the Alpha Coronation of '46 . . . Alpha Queen, '46-47 . . . Grid-iron Queen '46-47 . . . Who's Who.

JOHNNIE MAE HARDY

Cincinnati, Ohio

HOME ECONOMICS
Home Economics Club.

. . . poised, amiable, and ambitious . . . likes bicycling, creative art, and likes bicycling, creative art, and bowling . . . her pet peeve is hearing about a movie before seeing it . . . she will always remember the days she spent in Frazier Hall . . . likes Mrs. Davis's Classes . . . desires to become a Dietician.

OPHELIA HARMON
Detroit, Michigan

SOCIOLOGY

N.A.A.C.P.

"Fee Fee" . . . cheerful, little and stylish, good-natured . . . loves horseback riding and collecting records . . . dislikes closed windows in classrooms . . . favorite prof. is Dr. Frazier . . . she plans to be a social worker.

WALTER C. HARRIS, JR.
Palatka, Florida

ALPHA PHI ALPHA ZOOLOGY
N.A.A.C.P.

. . . likes swimming, horseback riding, and reading . . . a quiet fellow who dresses nice and looks the same.

LELA LORRAINE HAWKINS
Indianapolis, Indiana

DELTA SIGMA THETA
SOCIOLOGY AND HOME ECONOMICS
Fellowship Council President.

"Lee", we all agree is as active as a girl can be . . . dynamic impulsive . . . her determined spirit and twinkling eyes have helped send Fellowship Council striding forward . . . favorite memory is her freshman year . . . favorite prof., Mr. Edwards . . . hopes to be a dress designer.



JUDITH A. HEDGEPATH
Chillicothe, Ohio

DELTA SIGMA THETA SOCIOLOGY
Fellowship Council Corresponding Secretary.

"Judy" . . . friendly, nonchalant, always smiling . . . likes bike riding, horseback riding, dancing . . . her favorite memory is the night she came off probation for Delta . . . favorite prof., Dr. Branson.

JAMES M. HINTON, JR.
Columbia, South Carolina

HISTORY

"Jimmie" . . . a quiet, unassuming person, looking for the simple things of life . . . likes photography and reading . . . favorite prof. is Dr. Rayford Logan . . . plans to become an attorney at law.

HUGH HOLCOMBE

ALPHA PHI ALPHA PSYCHOLOGY
Friendly . . . known for his clothes and taxi.



VIVIAN V. HOLEMAN
Asbury Park, New Jersey
SOCIOLOGY

Ivy Leaf Club.
"Viv" . . . congenial, independent, always well dressed . . . loves to dance . . . likes to remember her Freshman year in Crandall Hall . . . dislikes affectations . . . favorite prof. is Miss Perry.



GRETCHEN VASSAR HOLMES
Trenton, New Jersey
PHYSICAL EDUCATION

Pyramid Club; N.A.A.C.P.; Women's League; F.T.A.; Fellowship Council; W.A.A.; Modern Dance Club; Alternate Mentor; Bison Staff.
"Gretch" . . . effervescent, witty, and jovial . . . the devil's deputy knows no boredom . . . likes music, sports and creative dancing . . . pet peeve, crowded locker rooms . . . will always remember her senior year at Howard . . .



MAVIS HOLNESS PRE-MED
Our friend from the islands . . . Better known as the Body.

HENRY O. HOUZE
Pittsburgh, Pennsylvania
OMEGA PSI PHI, DEAN OF PLEDGES
CHEMISTRY

Varsity "H" Club President; Economics Club; N.A.A.C.P.; M.D.C.; Gridiron Club Captain; Football Team Captain; Senior Class President; A.V.C. President.
"Hank" . . . congenial, thoughtful . . . well known for the wonderful record he made on the football team . . . received Omega Psi Phi achievement award . . . Who's Who,

CLARENCE EVENS HUBAH
Trinidad
ZOOLOGY

Sigma Xi.
. . . quiet and unassuming . . . likes raising bees . . . plans to go into the field of medicine.

WILLIAM R. HYDE
St. Paul, Minnesota
ALPHA PHI ALPHA PRE-MED
Basketball Team; Rifle Squadron;
Beta Kappa Chi.

"Bill" . . . quiet, idealistic, a fine fellow who promises to be a fine doctor . . . likes sports, especially basketball and swimming . . . dislikes bright lights at dances . . . likes to remember his probationary period . . . favorite prof., Dr. Cooper.





CLIFTON JACKSON
Lynchburg, Virginia

CHEMISTRY

Women's League Steering Committee; House Government; Ivy Leaf Club.
"Cliff" . . . sweet, charming and easy-going . . . her hobbies are playing tennis, dancing, and photography . . . plans to become a dentist.



GLORIOUS MABLE JACKSON
Atlanta, Georgia

ENGLISH

. . . quiet and intelligent . . . spends her leisure hours reading, playing tennis and bowling . . . likes Dr. Davis, Dr. Johnson, and Mr. Grant as professors . . . plans to become an English teacher.



FREDERICA V. JEFFERSON
Washington, D. C.

ALPHA KAPPA ALPHA

PSYCHOLOGY

Hilltop Staff; Student Affiliate in American Psychological Association.
"Freddy" . . . serious, quiet, and sincere . . . likes reading and making jewelry . . . dislikes snobbery . . . will always remember Mr. Max Werner's appearance here . . . favorite prof. is Dr. Sumner . . . plans to go into Clinical Psychology.

VIRGINIA MAE JERVEY

Washington, D. C.

DELTA SIGMA THETA

PSYCHOLOGY
Howard Players; Fellowship Council; Off Campus House Dramatic Club Leader; Off Campus House Photography Club; Delta Sigma Theta Recording Secretary.
"Jervay" . . . "Mop Top" . . . a winning, effervescent personality, a refreshingly cheerful smile at all times . . . likes photography, and sports . . . pet peeve, thoughtlessness on the part of others.

JUANITA H. JOHNIGAN

Dayton, Ohio

PUBLIC SCHOOL MUSIC

Fellowship Council; Women's League; University Orchestra; Photography Staff.
. . . very understanding beneath her soft spoken words . . . likes photography, dancing, and hiking . . . dislikes people who live in the past . . . plans to teach music.

EDITH M. JOHNSON

Philadelphia, Pennsylvania

SOCIOLOGY

"Tutta" . . . gay, freehearted, straightforward . . . says she is always hungry and always sleepy . . . dormitory life is her favorite memory . . . does not like chewing gum on street cars . . . wants to become a Social Worker.



EDWARD E. JOHNSON

Kingston, Jamaica, B.W.I.

PSYCHOLOGY

Fellowship Council; Commerce Club; N.A.A.C.P.

"Doc" . . . ambitious, resourceful, friendly . . . enjoys dancing, and collecting cards . . . will always remember snowball battles between residents of Cook Hall and the A.S.T. Pin '43 . . . abhors long lines in cafeteria, bookstore, anywhere . . . favorite prof. is Dr. F. C. Sumner . . . plans to enter the field of medicine.

FRANK JOHNSON

COMMERCE AND FINANCE

Commerce Club Vice-President.

. . . "Action, diplomacy, and tolerance light the path for my way.

May I continue to follow in this path everyday."

GWENDOLYN Z. JOHNSON

SOCIOLOGY

Coolly efficient, she is bound to be successful.



JAMES C. JOHNSON

Birmingham, Alabama

ACCOUNTING

Commerce Club.

"Jimmy" . . . calm, cool and collected . . . likes swimming, and driving . . . dislikes artificial personalities . . . likes to remember Howard-Lincoln game, 1946 . . . favorite prof., Mr. Auzane . . . another businessman for Birmingham.

LOIS PEGGY JOHNSON

Atlantic City, New Jersey

DELTA SIGMA THETA - SOCIOLOGY

Fellowship Council; Dance Club; Senior Mentor; N.A.A.C.P.; Bison Staff.

"Peg" . . . sweet, considerate, and congenial . . . dislikes people who for lack of something better to do, call meetings . . . favorite prof. is Dr. E. Franklin Frazier . . . plans to become a Medical Social Worker . . . will always remember the singing around the magnolia tree and springtime on the campus.

THELMA A. JOHNSON

Winnipeg, Manitoba, Canada

ECONOMICS

Economics Club President; French Club.

"Canada" . . . sophisticated, candid, versatile, intellectually "heavy" . . . favorite recreation is swimming, and sketching . . . pet peeve is pedantic professors . . . ideal prof. is Dr. E. Lewis . . . favorite memory is three wonderful years at Howard . . . has planned an interesting career of Economic Research.

E. CORINNE JOHNSTON

Paterson, New Jersey

ALPHA KAPPA ALPHA SOCIOLOGY
Alpha Kappa Alpha Anti-Basilicus; Senior Mentor; N.A.A.C.P.; House Government; Bison Staff; Canterbury Club.

Corinne . . . ingenious . . . delightfully witty . . . likes reading . . . dislikes deceitful persons and those who misspell and mispronounce her name . . . she'll always remember Greek letter organizations singing around "the tree" on the women's campus, and going steady.

URSULA M. JOHNSTON

Paterson, New Jersey

CHEMISTRY
W.A.A.; N.A.A.C.P.; House Government; Fellowship Council; Canterbury Club; Ivy Leaf Club.

"Urs" . . . a very amiable person, easy-going, and refined . . . likes all sports, especially swimming . . . dislikes bright lights at dances . . . will always remember Truth Hall ghost walk . . . favorite prof. Mr. Frank Coleman . . . plans to go into the field of medicine.

EDITH M. JONES

Washington, D. C.

DELTA SIGMA THETA SPANISH
El Circulo Cervantes; Student Assembly; Howard Players.

"Edie" . . . amiable, good-natured . . . likes learning new songs . . . dislikes artificial personalities . . . favorite memory, being crowned queen of Omega Mardi Gras . . . favorite prof. Dr. Mercer Cook . . . plans to be an interpreter.



A. GRETCHEN JONES

Washington, D. C.

DELTA SIGMA THETA
PUBLIC SCHOOL MUSIC
Choir; Student Assembly; Class Corresponding Secretary.

"Gretch" . . . sweet, charming, interesting conversationalist . . . likes reading, ping pong . . . dislikes having to draw conversation from people . . . favorite memory, singing in the choir . . . will make an excellent music instructor.

JAMES L. JONES

St. Louis, Missouri

ALPHA PHI ALPHA
COMMERCE AND FINANCE
Commerce Club.

"Jimmy" . . . moderately gay . . . moderately serious . . . likes photography and wood-carving . . . has so many pet peeves that he can't decide which is his pet . . . plans to be a business executive . . . favorite prof. is Mr. Fitzhugh.

JUANITA CARNELL JONES

Daytona Beach, Florida

SOCIOLOGY
N.A.A.C.P.; U.N.O.; Women's League; F.T.A.; Brook's Baptist Club.

"Nell" . . . sedate, lady-like, and congenial . . . fond of orating, dramatics, swimming, oranges and sunshine . . . dislikes afternoon classes . . . favorite profs. are Dr. Eugene Holmes and Dr. Lofton . . . plans to be a psychiatric social worker.



RAYMOND M. JONES
Melbourne, Australia

KAPPA ALPHA PSI
CIVIL ENGINEERING
Engineering Council Business Manager; Commerce Club; N.A.A.C.P.; Bison Staff.
"Buster" . . . fun loving . . . likes photography, riding, movies sports . . . dislikes stereotyped expressions . . . favorite prof., Dr. Daniels . . . wants to be an engineer.



WILLIAM V. JONES
Philadelphia, Pennsylvania

ALPHA PHI ALPHA PSYCHOLOGY
Student Council Treasurer; University Choir; Freshman Advisory Staff Chairman; Class Vice-President; Tutorial Staff; Who's Who in American Colleges; Men's Bible Study Group Moderator; Kappa Sigma Debating Society; Economics Club; N.A.A.C.P. Alpha Phi Alpha Fraternity Vice-President and Corresponding Secretary.
"Billy" . . . kind, congenial, neat, altruistic . . . likes sports and reading . . . pet peeve, inefficiency . . . intends to become a physician.



KATHERINE V. KEARNEY
Newark, New Jersey

PSYCHOLOGY
Psychology Club; Bison Staff Photography Editor; Hilltop Staff; International Club Secretary; N.A.A.C.P.; Tutorial Staff; Senior Mentor Secretary; Class Parliamentarian; Fellowship Council; German Club; W.A.A.
"Kitty" . . . loved by all . . . ambitious, sincere, reliable and personality galore . . . will always remember the basketball games and her sophomore year . . . favorite prof. is Dr. Sumner.

JENINE ERNESTINE KEMP
Detroit, Michigan

ALPHA KAPPA ALPHA ENGLISH
Bison Co-Editor; Senior Mentor; House Government; Hilltop.
"Tine" . . . witty, reserved, efficient . . . plans to enter the field of journalism . . . dislikes non-dancers and worms . . . favorite profs., Mr. Sterling Brown and Dr. Arthur P. Davis.

CONSTANCE B. KENNEDY
Springfield, Massachusetts

ALPHA KAPPA ALPHA SOCIOLOGY
N.A.A.C.P.; W.A.A.; French Club; U.N.A.; Fellowship Council.
"Connie" . . . the only girl from Massachusetts with a Mississippi accent . . . likes mysteries and loafing . . . dislikes hypocrits . . . an electrifying personality . . . plans to go into the field of Social Work.

ODESSA KENNY

SOCIOLOGY
Sophisticated . . . Poised . . . she makes you say, "Ooh La! Dimples!"





DORRIE LAROUCH

Sociology

From South Carolina and proud of it.



HAZEL FITZGERALD LEE

Birmingham, Alabama

PSYCHOLOGY

N.A.A.C.P.; El Circulo Cervantes; Howard Players; F.T.A.; Psi Chi; Pyramid; Bison Staff.

"Ha Re" . . . is a gay, fun loving person; a loyal friend and one who understands people . . . she plans to be a psychologist . . . likes pretty shoes, swimming, books . . . pet peeve is a slap . . . favorite memory is Howard-Lincoln game 1944 . . . favorite profs. are Dr. Sumner and Dr. Meenes.



ELLEN EMILY LIPPMAN

Boston, Massachusetts

DELTA SIGMA THETA

PSYCHOLOGY AND SOCIOLOGY

Howard Players; Fellowship Council; Psychology Club; House Government; Dean of Pledges; Bison Staff; Alpha Phi Alpha Fraternity Queen.

"Patsy" . . . bouvant, gay, an extremely feminine young lady with a very sweet disposition . . . likes to listen to music and read good books . . . will always remember her sorority initiation and the Alpha Coronation Ball, '47.

JEAN MALLETTE

Psychology

Red hair . . . but quiet . . . blue eyes and sweet.

BERTHA MAE MARTIN

Baltimore, Maryland

ALPHA KAPPA ALPHA ZOOLOGY

Spanish Club; N.A.A.C.P.; Fellowship Council; International Club; H.A.A.

"Bert" . . . congenial, modest and shy . . . fond of tennis, bicycling, and collecting picture post cards . . . dislikes standing in lines . . . favorite profs. are Dr. J. W. Hughley and Mrs. L. B. Harper . . . plans to enter Dentistry.

JON MAXWELL

Arlington, Virginia

ZOOLOGY

Daubers Science Club.

"Jon" . . . easy to agree with, fond of grayish-green eyes that are subdued with a little brown . . . pet peeve is hats . . . fond of oil painting . . . will always remember "A Mid-Summer Night's Dream" . . . favorite prof. is T. Williams . . . plans to enter the field of medicine.



FERGUSE E. MAYRONNE, JR.
 New Orleans, Louisiana
 COMMERCE AND FINANCE
Commerce Club.
 "Fergie" . . . likes all sports, poetry
 and character studies . . . his favor-
 ite Professors are Dorsey and Logan
 . . . he wishes to become a Public
 Accountant.

LLYOD G. McCOY
 East Orange, New Jersey
 ALPHA PHI ALPHA PSYCHOLOGY
Bison Staff; Choir; Howard Players;
Tutorial Staff; N.A.A.C.P.; Usher
Board.
 . . . an all around fellow . . . wishes
 to be a psychiatrist . . . likes swim-
 ming, dancing, and life in general,
 and interesting people . . . pet
 peeve, Cook Hall telephone lines
 . . . will always remember the
 Alpha spring prom of "45".

NORMA J. McEACHRON
 New York, New York
 ALPHA KAPPA ALPHA
 DEAN OF PLEDGES PSYCHOLOGY
House Government; Mentor; U.N.;
Women's League; W.A.A.; Canter-
bury Club; Bison Staff.
 "Nikki" . . . sentimental, straight-
 forward, thoughtful . . . a lover of
 perfume and frilly clothes . . . to
 her clothes certainly make the man
 especially if he has on a navy suit,
 white shirt, and a navy and white
 tie . . . likes to style hair, and de-
 sign evening accessories . . . dislikes
 women who smoke on the street.



VERDIS WAVEN McMICHAEL
 Washington, D. C.
 COMMERCE AND FINANCE
 "Pop" . . . aims to do whatever he
 can, whenever he can, wherever he
 can, the best that he can . . . "Pop"
 likes all of his professors . . . just
 likes playing tennis in his spare
 time.

RAYMOND MERRIWEATHER
 OMEGA Psi Phi ENGINEER
 Friendly, campus barber . . .
 smoothie . . . ambitious.

AWILDA METCALFE
 Flint, Michigan
 ALPHA KAPPA ALPHA ACCOUNTING
Commerce Club; Senior Mentor;
House Government.
 "Willie" . . . likeable, sweet, quiet
 . . . fond of sports, music, reading,
 movies, dancing . . . favorite prof.,
 Dr. Fitzhugh . . . plans to become
 an accountant.

ROSS M. MILLER, JR.

East St. Louis, Illinois

ALPHA PHI ALPHA ZOOLOGY
N.A.A.C.P.; Fellowship Council;
Howard Players; Tutorial Staff;
Football Team; Chess Club; Bison
Staff; French Club; Chemistry
Club.

. . . ambitious, friendly, reserved,
well-mannered . . . likes sports,
chess, pretty cars, and beautiful
women . . . likes to remember sum-
mer session of '45 and '46 . . . fav-
orite profs., Dr. Dorsey and Dr.
Hansborough . . . wants to be a
doctor.

MARJORIE LOUISE MORGAN

Philadelphia, Pennsylvania

DELTA SIGMA THETA
SOCIOLOGY AND PSYCHOLOGY
Fellowship Council; F.T.A.
N.A.A.C.P.; International Council;
Choir; Modern Dance Club.

"Margie" . . . friendly, ambitious,
very likeable . . . likes to read, at-
tend plays, collect jewelry and per-
fumes . . . always dreaded registra-
tion day . . . will always remember
freshman year . . . favorite prof.,
Dr. Sumner . . . plans to be a
Psychiatric Social Worker.

ROY D. MORRISON, II

Memphis, Tennessee

PHILOSOPHY
Tutorial Staff; Choir; Chess Club;
Rifle Team.

"Count" . . . meditative, soft spoken
likes chess, photography and listen-
ing to symphonic music . . . dislikes
irrationality . . . plans to go into
the field of religion.



ELIZA MORTON

Philadelphia, Pennsylvania

HOME ECONOMICS
Spanish Club; Home Economics
Club.

"E.J." . . . reserved . . . likes pre-
paring all types of fancy dishes . . .
she will always remember the time
spent in the Practice House for
Home Ec. majors . . . "E.J." plans
to establish a nursery school some-
where's in the North . . . her favor-
ite teacher is Mrs. Davis . . . dis-
likes egotistical people.

LIZABETH MUMFORD

F. ASTON NORMAN

Boston, Massachusetts

ELECTRICAL ENGINEERING
Tutorial Staff.

"Tom" . . . has a flamboyant per-
sonality, there are as many sides to
him as a stained-glass window has
colors . . . likes to beat on the
drums . . . dislikes all eight o'clock
classes . . . yes, he likes long cars
and beautiful women . . . favorite
prof. is Mr. Hughley.



RUBY E. O'HARA
New Bern, North Carolina
Psychology

Women's League; W.A.A.
"Petootie Pie" . . . pleasant with an even disposition and an unassuming air, also analytical . . . likes dancing, and swimming . . . "Petootie Pie" never missed a basketball game during '46 or '47 . . . her pet peeve is disorderly newspapers . . . her favorite prof. is Dr. Sumner . . . plans to become a Clinical Psychologist.



LORETTA DEARE OSGOOD
Palatka, Florida
Zoology

Commerce Club; Fellowship Council; Wesley Foundation; N.A.A.C.P.; Pyramid Club; Bison Staff; Women's League.
"Lorry" . . . graceful, friendly, energetic . . . finds pleasure in making friends, reading, and skating . . . pet peeve, standing in lines . . . "Lorry" will never forget sitting on her suitcase for two days upon her arrival at Howard . . . plans to go into dentistry.



LOUISE PANKEY
Charlottesville, Virginia
English

"E" . . . quiet, sweet, and affable . . . spends her leisure hours playing tennis and reading . . . favorite prof. . . Dr. Taylor . . . plans to become a teacher.

HELEN MILLICENT PARKER
Washington, D. C.

"Parko" . . . affectionate, lively versatile, sincere . . . enjoys collecting bric a brac and records . . . likes dancing, the theatre and tall men . . . she'll always remember the Howard-Lincoln game 1946 . . . favorite prof. Dr. Arthur P. Davis . . . she plans to teach English.

ROBERT L. PARKER, JR.
Mayfield, Kentucky

OMEGA Psi Phi; Sociology; A.T.C.; N.A.A.C.P.; Commerce Club.
"Punch" . . . friendly, energetic . . . fond of reading poetry . . . a strong advocate for organization . . . favorite prof. Dr. Frazier . . . plans to become a minister.

FRED D. PARROTT, JR.
Houston, Texas

ALPHA Phi ALPHA; Chemistry; Varsity H. Club; Fellowship Council; N.A.A.C.P.; Chemistry Club; French Club.
"Duke" . . . ambitious, athletic, virtuous, spends his leisure time reading good books . . . hopes to become a successful physician . . . likes sophisticated women.





DOROTHY MILDRED PAXTON
 Charleston, West Virginia
 BETA KAPPA CHI CHEMISTRY
 "Dot" . . . likes movies, reading,
 collecting poems . . . will always re-
 member the house dances . . . de-
 tests classes on Friday afternoon
 . . . favorite subjects are German
 and Chemistry . . . favorite profs.
 Mr. Williams and Dr. Barnes . . .
 plans to be a laboratory technician.



DORIS EMILY PEAMON
 Philadelphia, Pennsylvania
 PHYSICAL EDUCATION
 W.A.A.; F.T.A.; N.A.A.C.P.
 "Pete" . . . amicable, jovial, viva-
 cious, a true friend is our friend
 "Pete" . . . will always remember
 her dear old college days . . . she
 likes eating, sleeping, dancing, and
 sports . . . pet peeve, a hypochon-
 driac . . . likes Mr. Burr . . . in-
 tends to go into Physical Educa-
 tion as an instructor.



MARION PENNINGTON
 Tall, slick chick . . . She is the
 Countess of the class.

LOUISE PERKINS
 Louisa, Virginia

ZOOLOGY
 Quiet, conservative, serious . . . fa-
 vorite prof., Dr. Ellinger . . . plans
 to go into psychiatry.

CHESTER G. PATERSON
 New Brunswick, New Jersey

OMEGA PSI PHI DENTISTRY
Tutorial Staff; Usher Board;
M.D.C.
 "Chet" . . . always in a hurry . . .
 likes to remember dormitory days
 . . . favorite prof. is Mr. Hughley.

CALVIN J. PLATER
 Sunderland, Maryland

ACCOUNTING
Commerce Club; A.F.C.; Spanish
Club.
 "Little Joe" . . . jovial, easy-going,
 cooperative, and prompt . . . fond
 of playing tennis . . . favorite prof.
 is Mr. Fitzhugh . . . plans to be a
 Public Accountant.



JUNE ELIZABETH PLAYER

Jamaica, Long Island

PSYCHOLOGY

*Fellowship Council; N.A.A.C.P.;
Bison Staff; Psi Chi; Women's
League; W.A.A.*

June . . . cool, calm, and very nicely
collected . . . likes ballet and jig-
saw puzzles . . . loathes busy bodies
. . . will always remember the
Greencian Ball '46 . . . plans to be-
come a physician . . . sophisticated
lady.

BEATRICE A. RENWRICK

Frederickburg, Virginia

SIGMA GAMMA RHO SOCIOLOGY

Commerce Club.

"Ducky" . . . aggressive, effective,
idealistic . . . likes to travel and to
read the classics and Bible . . . dis-
likes people who are always late
. . . favorite prof. is Dr. Krassovsky
. . . plans to be a Medical social
worker.

FLOSSIE J. REVELS

Chicago, Illinois

SOCIOLOGY

"Floss" . . . energetic, friendly, sin-
cere . . . likes football, poetry, mu-
sic . . . dislikes gum chewers . . .
will always remember summer
school '46 . . . favorite prof., Mr.
Fitchett . . . greatest ambition is
to become a social worker.



IONE JUANITA W. REYNOLDS

Washington, D. C.

PHYSICAL EDUCATION

W.A.A.

"Onie" . . . sophisticated, quiet,
congenial . . . likes reading, sewing,
swimming . . . dislikes conceited
individuals . . . favorite memory,
Thanksgiving Ball . . . favorite
prof., Mr. John Burr.

SHIRLEY REYNOLDS

GLORIA H. ROBERTS
Jamaica, British West Indies

CHEMISTRY

. . . tall, athletic, frank, energetic
. . . fond of cycling, horse riding,
swimming, and hiking.

NANCITA C. ROBINSON

Washington, D. C.

DELTA SIGMA THETA CHEMISTRY
Student Assembly

"Sicky" . . . friendly, a great personality . . . likes swimming, ping pong . . . dislikes superficial people . . . will always remember campus at sunset . . . favorite prof., Dr. Barnes . . . will make an excellent organic chemist.

RUTH ANN ROBINSON

Ardmore, Pennsylvania

LATIN
W.A.A.; F.T.A.; Modern Dance Club; German Club; N.A.A.C.P.; Bison Staff; Senior Mentor; Tutorial Staff.

"Robin" . . . amiable, conservative, a true individualist . . . "Robin" enjoys reading, playing the piano and the theatre . . . her favorite memory is dancing with the modern dance club in New York . . . favorite prof., Dr. Snowden . . . plans to teach Latin.

ESTHER M. ROLLINS

Washington, D. C.

KAPPA MU PSYCHOLOGY

. . . gay, dependable, conscientious
Esther . . . likes music and dancing
. . . is as "heavy" as they come . . . plans to be a clinical psychologist.



WILLIAM ROUNTREE

Washington, D. C.

OMEGA PHI PSI PHYSICAL EDUCATION
A.F.C.; N.A.A.C.P. Treasurer; Basketball Team.

"Tree" . . . friendly, popular, athletic . . . fond of all sports . . . pet peeve is German . . . favorite prof. is Mr. J. H. Burr . . . plans to be a Physical Education Teacher.

MARILYN RYAN

Vinita, Oklahoma

ALPHA KAPPA ALPHA HISTORY
Marilyn . . . is quiet and reserved . . . fond of reading, dancing and listening to music . . . favorite prof. is Dr. Sterling Brown . . . plans to enter the field of Social Work.

A. JAMES SAMUDA

Boston, Massachusetts

OMEGA PSI PHI CIVIL ENGINEERING
"Pretty" . . . if happiness can be procured and there is success in the future, that is what he will have . . . will always remember frat. probation . . . he dedicates his graduation to his family and friends who helped him to succeed . . . favorite profs. are Professors Steel and Roberts . . . plans to enter the field of Architectural Engineering.



DELORES G. SAUNDERS
Norfolk, Virginia

Sociology
Ivy Leaf Club; W.A.A.; N.A.A.C.P.; Psychology Club; Chess Club.
"Dot" . . . cute and quiet . . . the month of October stands out in her mind especially in the years of '44 and '45 . . . she dislikes waiting for people . . . "Dot" is another one of our three year graduating seniors . . . her favorite prof. is Dr. Banner . . . plans to go into the field of Medical Social Work.

ERNESTINE MARIE SELLS
Greenport, Long Island, New York
ALPHA KAPPA ALPHA SOCILOGY
Wesley Foundation Secretary.
"Ernie" . . . generous, energetic, and pleasant . . . spends her spare time engaging in photography, dancing, and just having fun . . . will always remember summer school session of '46 . . . her favorite prof. is Dr. Alain Locke . . . greatest ambition is to become a medical social worker . . . dislikes egotistical and unconcerned people.



ROYSTON B. SCOTT
Demerara, British Guiana

Psychology
. . . favorite professor is Dr. Sumner . . . thinks Howard is grand . . . psychology fascinating . . . hobby radio . . . loves to hear opinion of students from different parts of U. S. . . interested in trend of thought of Howard students.

E. PATRICIA SHAW
Harrisburg, Pennsylvania
DELTA SIGMA THETA ENGLISH
Student Director University Assembly; Bison Associate Editor; Hill-top; Student Affairs Committee; A.V.C.-A.; Howard Players Business Manager; Stylus Staff; Jazz Club; Modern Dance Club.
"Pat" . . . vivacious . . . likes swimming, reading and music . . . pet peeve synthetics . . . will always remember the campus immediately after a snowfall . . . likes Dr. Sterling Brown . . . intends to go into advertising.



ALMA LOUISE SELLERS
Springfield, Illinois

Voice
Phi Alpha Mu Musical Society; Choir; International Club.
"Al" . . . changeable, imaginative, conservative and hard to please . . . will always remember the first summer session of '46 . . . her pet peeve is skiving . . . hobbies are reading and concert programs . . . favorite prof. is Hazel L. Harrison . . . "Al" is one of the assistant choir conductors for Unit B. of the Choir.

MARCELLUS W. SHIRLEY
Dallas, Texas
SOCIOLGY
. . . reserved, independent . . . likes tennis and squab raising . . . favorite prof. Dr. Cook . . . plans to be a lawyer.





ELEANOR M. SIMMONS
 Monongahela, Pennsylvania
 ALPHA KAPPA ALPHA PSYCHOLOGY
House Government Vice-President; Fellowship Council Corresponding Secretary; Women's League President; Mentor; Dean's Honor List; Who's Who in American Colleges and Universities.
 "Till" . . . likeable, pleasant, businesslike . . . fond of talking and skating . . . will always remember springtime at Howard . . . dislikes people who make false accusations . . . favorite profs. are Dr. Sterling Brown, and Dr. E. O. Knox.

HENRIETTA SINGLETON
 DELTA SIGMA THETA PSYCHOLOGY
Howard Players.
 Affectionately called Penny . . . Sweet voice . . . The men secretly call her Cuddles (wishful thinking).

ALFREIDA MARIE SMITH
 Paterson, New Jersey
 ENGLISH
Women's Glee Club; Alternate Mentor; W.A.A.
 "Freddie" . . . a true friend, honest and sincere . . . enjoys playing the piano during her idle hours . . . dislikes conceited and unsociable people . . . her favorite memory will always be her dormitory associates . . . plans to go into the teaching career.

LA VERNE DENNIS SMITH
 Ocean City, New Jersey
 ALPHA KAPPA ALPHA ENGLISH
 . . . glamorous . . . friendly and a bit retiring.

LAWRENCE EDWARD SMITH
 Washington, D. C.
 POLITICAL SCIENCE
Political Science Club; Bison Staff; N.A.A.C.P.
 "Laffy" . . . intelligent, well-mannered, diplomatic . . . likes photography . . . dislikes social butterflies . . . will always remember winning first place in Circulo Cervantes . . . likes profs. Brown, Seiferth, Locke, and Dorsey . . . intends being a lawyer.

VALERIAN EDWARD SMITH
 Charleston, West Virginia
 OMEGA PSI PHI DENTAL SCHOOL
 M.D.C. Treasurer; N.A.A.C.P.; Choir; Usher Board Vice-President.
 "Smitty" . . . a happy-go-lucky fellow who is always showing his twenty-eight (his third molars have not come in yet) . . . likes photography, music, and tennis . . . dislikes Marrons . . . likes all of his professors . . . plans to become a dentist.



SHIRLEY MARIE SMITH
Cleveland, Ohio

ALPHA KAPPA ALPHA HISTORY
Alpha Kappa Alpha President; United Nations President; Student Council Secretary; Who's Who in American Universities and Colleges; Mentor; Choir; Bison; Student-Faculty Committee; House Government; Secretary; Little Theater; Howard Players; Hilltop.
"Shir-lee-mare-ee" . . . winning, candid but diplomatic . . . fond of collecting pictures of South America . . . dislikes "pressers" intensely.

LUCILLE M. SPRINGER
Cambridge, Massachusetts

SCIENCE
Atomic Club; W.A.A.; Youth Movement; Photography Club; Ivy Leaf Club.
"Chickie" . . . friendly, good-natured . . . likes swimming and reading . . . intends to enter the medical field and investigate the X-ray . . . will always remember her days at Howard . . . favorite professor is Dr. R. Coleman.

DAVID L. STRATMAN
Southport, North Carolina
OMEGA PSI PHI
COMMERCE AND FINANCE
Commerce Club; A.F.C.; Economic Club.

"Dave" . . . friendly, sincere, philosophical, quiet . . . likes reading and hunting . . . dislikes snobbishness . . . favorite memory is Howard in the spring . . . favorite professor is Mr. Dorsey . . . greatest ambition is to become a businessman.



ROSE MARIE TAVERNIER
Springfield, Massachusetts

POLITICAL SCIENCE
N.A.A.C.P.; French Club.
"Tay" . . . sincere and friendly . . . possessing that grand New England wit . . . just loves to talk and read . . . dislikes people stricken with the so-called "Howard air" . . . will always remember her college days . . . plans to go into Law.

THELMA O. THOMAS
Washington, D. C.

HISTORY
"Tina" . . . poised, ambitious, and sophisticated . . . likes dancing and horseback riding . . . abhors rude individuals . . . one of Howard's promising history teachers . . . likes Dr. Lofton's classes.

LILLIAN VIRGINIA THOMAS
Washington, D. C.

BIOLOGY
University Orchestra; W.A.A.; German Club.
"Ginger" . . . humorous and amicable . . . one who always enjoys good times . . . likes playing badminton and tennis . . . her pet peeve is studying . . . will always remember the Howard reunion . . . favorite prof., Dr. Clark . . . greatest ambition is to become a physiotherapist.

PAULYNE THOMPSON

Louisville, Kentucky

ALPHA KAPPA ALPHA SOCIOLOGY
Newman Club; N.A.A.C.P.; F.T.A.
Treasurer; Women's League;
U.N.O

"Polly" . . . cool, neat . . . likes
dancing, writing, horseback riding
. . . favorite professor is Dr. E.
Frazier . . . greatest ambition is to
become a medical sociologist.

CONSTANCE YVONNE TIBBS

Washington, D. C.

PIANO

Phi Alpha Nu Musical Society;
Wesley Club; University Orchestra;
French Club; International Club;
Summer Choir Accompanist.

"T-Wann" . . . talented, conscien-
tious, and has a vivid imagination
. . . likes swimming, reading, and
listening to records . . . dislikes
people who skivver . . . was
awarded a Teaching Fellowship in
senior year, and selected Who's
Who in American Universities.

DOLORES CATHERINE TOMS

Washington, D. C.

PSYCHOLOGY

German Club.

Dolores . . . athletic, studious,
heavy as they come . . . likes swim-
ming, tennis, and basketball . . .
likes Dr. Meenes' classes plans to
become a Psychiatrist.



ALLENE JOYCE TOOKS

Philadelphia, Pennsylvania

DELTA SIGMA THETA ART

Dauber's Club Treasurer; Fellow-
ship Council; Women's League
Steering Committee; University
Choir; Stylus Club; Howard Players.

"Tookie" . . . frank, sincere, de-
pendable, a sense of humor rang-
ing from wit to clowning . . . one
of her outstanding memories is the
snowfight on the campus in '43"
. . . likes singing and sewing . . .
dislikes undependable people.

MARIE TUCKER

Duquesne, Pennsylvania

SOCIOLOGY

Spanish Club; N.A.A.C.P.

"Candy" . . . loyal, humorous, affec-
tionate . . . collecting odd snap-
shots and reading are her pastimes
. . . dislikes gum chewing . . . likes
to recall her first infatuation on
the campus . . . greatest aspiration
is to become an efficient medical
social worker.

JUANITA TURNER

Trenton, New Jersey

ALPHA KAPPA ALPHA ENGLISH

Alpha Kappa Alpha Sergeant-at-
Arms; N.A.A.C.P.; Hilltop Copy
Editor; F.T.A. Secretary; Summer
School Chorus.

"Nita" . . . effervescent, studious,
and serious . . . likes dancing, mu-
sic, and making scrap-books . . .
dislikes cramming for final exam-
inations . . . will always remember
the games and dances held on the
campus . . . her favorite profs. are
Dr. Lovell and Mrs. Maryrose
Allen.



CARROLL F. TYLER, JR.
Washington, D. C.

POLITICS

Political Science Club; Commerce Club.

... congenial, warm, energetic ... likes writing ... likes people ... dislikes the lack of popular intramural activities ... will always remember his first day at Howard ... favorite professor is Dr. Eric Williams.



RAYMOND H. TYLER
Washington, D. C.

ACCOUNTING

Commerce Club.

"Ray" ... spends his free time playing golf, fishing, hiking, and swimming ... plans to go into business.



LILIAN GREENE WARD
Albany, Georgia

HOME ECONOMICS

A.F.C. Corresponding Secretary.

"Lil" ... second War veteran registered at Howard as a student ... favorite memory is her army experience ... favorite profs. are Dr. Mercer Cook and Mrs. A. P. Davis.

MARY ALICE WARD
Washington, D. C.

SIGMA GAMMA RHO SOCIOLOGY

... serious, quiet, sweet ... likes collecting material for scrap book ... dislikes people who always brag ... favorite professor is Dr. Logan ... plans to be a psychiatric social worker.

GRACE HELEN WARNER
Trenton, New Jersey

HISTORY

F.T.A.; W.A.A.; House Government; International Club; Bison Staff; Senior Mentor; Mentor Advisor for Freshman House Government; Women's League.

Grace ... gracious, charming, poised, amicable ... enjoys meeting people, swimming, meets, archery, and reading ... pet peeve is a professor who gives an unreasonable assignment a few days before exams.

DORIS LOUISE WASHINGTON
Dallas, Texas

ACCOUNTING

Commerce Club; Choir.

"Buckie" ... vivacious, talkative, and ingenious ... hobbies are music and reading ... pet peeves are boisterous noises ... favorite professor is Mr. A. Auzeene ... favorite memory is January 4, 1947 ... plans to establish exclusive supper clubs beginning in the Southwest ... her planned career is a certified public accountant.





EMOGENE A. WATKINS
Memphis, Tennessee

ENGLISH

Hilltop.

"Gene" . . . friendly, congenial, and sincere . . . likes to analyze people, fond of singing, dancing, and listening to good music . . . will always remember the singing of the Greek-letter organizations . . . dislikes deceitful people . . . helped in producing *Who's Who of 1947* . . . favorite prof. is Dr. Sterling Brown . . . plans to be a journalist.



CHARLOTTE WATKINS



GRADY WELLS
Tyler, Texas

ALPHA PHI ALPHA PSYCHOLOGY
Tutorial Staff; N.A.A.C.P.; Football Squad; Truck Team; Varsity H. Club Secretary.

. . . ambitious, calm, astute . . . likes photography, reading . . . favorite prof., Dr. Meenes . . . plans to become a doctor.

JANICE DELORES WHITBY
Detroit, Michigan

DELTA SIGMA THETA SOCIOLOGY
Mentor; N.A.A.C.P.; Women's League; D.S.T. Treasurer.

"Porky" . . . very likeable, an apple-cider personality; sweet and sparkling, also wholesome; knows how to count, add, and subtract (which is more than most of us can say), well-groomed and stylish . . . hobbies are "Saintey-Waintey", and making desserts.

RANDOLPH L. WHITE
Baltimore, Maryland

HISTORY

A.F.C.; Howard Players; Hilltop Staff.

"Randy" . . . friendly, ebullient with a good sense of humor . . . likes writing and compiling scrap-books . . . dislikes standing in lines . . . favorite prof. is Dr. Lofton . . . will make a good lawyer.

WILFRED JAMES WHITE
Hawthorn, Florida

ENGLISH

Political Science Club; N.A.A.C.P.; Scroller Club.

White . . . the conservative type who likes beautiful women, swimming, and basketball . . . long speeches and talkative young ladies unnerves him . . . has fond memories of his freshmen days . . . his greatest ambition is to enter into International Politics.



ODELLA F. WHITSETT

Pittsburgh, Pennsylvania
"Wabbit" . . . witty and independent . . . a future child Social Worker . . . likes to remember the house dances . . . enjoys sports in general . . . annoyed by chewing gum poppers.

ESTHER CATHERINE WHYTE

Baltimore, Maryland
PSYCHOLOGY
El Circulo Cervantes; W.A.A.; Hill-top Staff.
"Margie" . . . plans to be a clinical psychologist . . . likes golf, tennis and horseback riding . . . dislikes snobbishness.

EMMA L. WILKINS

Washington, D. C.
SOCIOLOGY
"Emmy" . . . progressive, charming, exceedingly friendly . . . spends her leisure hours playing tennis and horseback riding . . . boisterous people on street cars is her pet peeve . . . Dr. Lofton is her favorite professor . . . her greatest ambition is to become a social service worker.



ELAINE M. L. WILLIAMS

New York City, New York
SOCIOLOGY
Modern Dance Club; Bison Staff; N.A.A.C.P.; W.A.A.
"Elainie" . . . serious and sincere . . . hobby is oil paintings . . . favorite prof. is E. F. Frazier . . . favorite memory is Christmas of '46 . . . planned career is psychiatric social work.

LEATRICE JOY WILLIAMS

Cleveland, Ohio
SIGMA GAMMA RHO ENGLISH
Fellowship Council; Kappa Sigma; House Government; W.A.A.; Hill-top; N.A.A.C.P.
"Lea" . . . talkative, energetic, great sense of humor . . . dislikes people who put on "airs" . . . likes reading, dramatics . . . favorite memory, dormitory life . . . favorite prof., Dr. Davis.

SHIRLEY C. WILLIAMS

Brooklyn, New York
ALPHA KAPPA ALPHA SOCIOLOGY
Howard Players; Canterbury Club.
. . . sweet and neat . . . Shirley will always remember rehearsals had for the play "Our Town" given by the Howard Players . . . superficial people is her pet peeve . . . she will also remember Dr. Davis and Mr. Edward's classes . . . her greatest ambition is to strengthen Race Relations.

WILLIE MAE WILLIAMS

New York, New York

DELTA SIGMA THETA VOICE
Choir Treasurer; Orchestra; Phi
Alpha Mu Musical Society.
Willie . . . serious, enthusiastic,
pleasing . . . likes bicycle riding,
hockey, and sewing . . . will always
remember the Choir Concert Tour
of '46 . . . favorite prof. is Mr. T.
H. Kerr . . . plans to be a concert
artist.

CHARLES WILSON

ANNA MARY WRENN

Manchester, Ohio

SOCIOLOGY
"Anne" . . . sweet and demure . . .
likes reading and playing golf . . .
she will always remember Dr. Fraz-
ier's class in Negro in America . . .
favorite prof. is Dr. Einaar . . .
plan to become a Medical Social
Worker.



AILEEN B. CLARK

Brooklyn, New York

ALPHA KAPPA ALPHA
POLITICAL SCIENCE AND SOCIOLOGY
House Government President;
Class Vice-President; N.A.A.C.P.;
Vice-President; Fellowship Council
Paper Editor; Civil Rights Commit-
tee Chairman; International Club
Secretary; Hilltop Editor; Modern
Dance Club; Fellowship Council.
"A.B.C." . . . vibrant, resourceful,
energetic . . . fond of modern dan-
cing and dramatics . . . dislikes un-
sociable people.

OLIVE ANN DILLARD

Sharon, Pennsylvania

GENERAL SCIENCES
French Club; N.A.A.C.P.; Fellow-
ship Council; Women's League.
Ann . . . the smooth little girl with
the big brown eyes . . . likes tennis,
horseback riding and pinochle . . .
has fond memories of our freshman
year . . . plans to become a labora-
tory technician.

JONATHAN C. GIBBS

Rutherford, New Jersey

ALPHA PHI ALPHA ZOOLOGY
Class Officer; Howard Players; Fel-
lowship Council; Commerce Club;
Choir; Tutorian Staff; N.A.A.C.P.;
Beta Kappa Chi Staff.
"Buddy" . . . favorite memory is
Old Law School and environs . . .
enjoys reading . . . pet peeve super-
ficiality . . . favorite professor Dean
Hawkins, "The Hawk" . . . Psychi-
atrist.



MARY SMITH MARSHALL
Pittsburgh, Pennsylvania

PIANO
"Smitty" . . . quiet and thoughtful . . . likes mystery stories . . . favorite prof. is Miss Hazel Harrison . . . plans to teach.

BETTIE A. McDANIEL
Rock Hill, South Carolina

COMMERCE
"Mac" . . . likes reading and dancing . . . dislikes the Registrars' Office . . . likes to remember ballet dancing . . . her favorite professor is Mr. J. A. Washington . . . plans to be a legal secretary.



FREDERICK D. MITCHELL
South Charleston, West Virginia

CHEMISTRY
"Father" . . . "Pop" . . . realist, always hungry . . . likes listening to symphonies . . . dislikes snobbishness . . . likes to remember his release from the army . . . favorite prof. Dr. Hansborough . . . slated to become one of Virginia's best doctors.

JAMES CARROLL McMILLAN
Sanford, North Carolina

ART
Chess Club: Omega Psi Phi Pledgee; Stylus Club Probationary Member; Dauber's Art Club President.
. . . fond of sketching, photography, basketball, and chess . . . will always remember jubilant art class sessions in Thirkield Hall, the art gallery in Founder's Library, and the long, tiring wait in the bookstore line to get the truck load of necessary supplies.



DAVID HINTON WEAVER
Durham, North Carolina

OMEGA PSI PHI ZOOLOGY
Science Club.
"Lil David" . . . easy-going, sincere . . . a transfer student from North Carolina College who likes swimming, basketball, tennis, and singing . . . he is anticipating entering Howard University School of Medicine.

HENRY GRAY GILLEM
Washington, D. C.

ALPHA PHI ALPHA ZOOLOGY
. . . ambition to be a doctor . . . veteran of the U. S. Navy.



WILLIAM SPAULDING
Hallsboro, North Carolina

ENGINEERING
Engineering Council President.
. . . dynamic, exuberant, and suave . . . favorite professor is Mr. D. Howard.

CHARLES FOSTER
KAPPA ALPHA PSI POLITICAL SCIENCE

CHARLES H. FINLEY
Marshall, Texas

CHEMISTRY

A.F.C.
"Stanky" . . . efficient, courteous,
kind and studious . . . likes music
. . . pet peeve is people who claim
to know it all . . . favorite memory
is his entrance into Howard . . .
favorite prof. is Dr. L. N. Ferguson
. . . will make an excellent doctor.

LLEWELLYN GOLDSBY
Kansas City, Missouri

KAPPA ALPHA PSI

COMMERCE AND FINANCE
*Men's Dormitory Council; Kappa
Sigma; N.A.A.C.P.; Der Deutsche
Verein; Economics Club; Com-
merce Club.*
"Goldsby" . . . likes observing peo-
ple and parties . . . his favorite
prof. is Prof. Washington.

THEODORE S. GORDON
Philadelphia, Pennsylvania

ALPHA PHI ALPHA

ELECTRICAL ENGINEERING
*Beta Kappa Chi Honorary Scien-
tific Society.*
"G.G." . . . friendly, easy-going . . .
likes model railroading . . . will al-
ways remember the day he was di-
charged from the army . . . favorite
prof. Lee J. Purnell . . . greatest
ambition is to become a research
engineer.

VELA ELIZABETH HOLMES
Syracuse, New York

EDUCATION

"Andy" . . . ambitious, determined,
married and has three children . . .
also a graduate of Syracuse Normal
School . . . likes to read and play
tennis . . . dislikes loud harsh
voices . . . favorite prof. Dr. E. F.
Frazier . . . wants to be a school
teacher.

EVELYN MAE MCKINNEY
Alexandria, Virginia

SOCIOLOGY

. . . friendly, happy-go-lucky, reg-
ular, capricious . . . likes sports,
dancing, reading . . . dislikes pseu-
do-personalities and summer 1946
. . . favorite professors are Dr.
Einar, Dr. Frazier, Dr. Lofton, and
Dr. Holmes.

ORVILLE J. McSHINE
Port of Spain, Trinidad

PHI BETA SIGMA

FRENCH

Tutorial Staff.
. . . friendly . . . aspires to a teach-
ing career . . . likes chess and ten-
nis . . . "The Gentleman".

DOUGLASS K. STAFFORD
Jacksonville, Florida

ENGLISH

Howard Players.
Stafford . . . sharp tongue, mischie-
vous, and witty . . . he is the first
English major to graduate with
twenty-five graduate quarter hours
. . . he completed his undergradu-
ate work in two and one half years
received the Lucy Moton Fellow-
ship to Canada . . . his greatest
ambition is to become a writer.

THOMAS J. WHITING
Cleveland, Ohio

COMMERCE AND FINANCE

*Men's Dormitory Council; Gridiron
Club; Varsity "H" Club; Kappa
Sigma Debating Society; Commerce
Club.*
"Tom" . . . nonconventional . . .
his favorite memory is the Scroller
Dance of '42 . . . his pet peeve is
Dr. Chapman . . . favorite prof. is
James Washington . . . plans to go
into Public Accounting.

EDWARD RICHARD McDANIEL
Newark, New Jersey

ALPHA PHI ALPHA PSYCHOLOGY

*Class Junior President; Alpha Phi
Alpha Financial Secretary, Vice-
President and President; M.D.C.,
Treasurer; Freshman Advisors
Chairman; Student Council; Stu-
dent Faculty Committee; Cook Hall Stu-
dent Assistant Director; Who's
Who.*
"Mac" . . . courtesy personified,
efficient, integrity of purpose . . .
likes handicraft and sketching in
his leisure moments . . . plans to
be a journalist . . . lists his pet
peeve as superficiality.

MARIE NATALIECE PLATTE
Fort Worth, Texas

PHYSICAL EDUCATION

*W.I.A.; N.A.A.C.P.; Wesley Foun-
dation; Fellowship Council.*
"Biddy" . . . quiet . . . likes Mr.
Burr's classes . . . the saying "Hope
got me" gets under her skin . . .
plans to go into the field of Physio-
therapy.

SARAH LOUISA SLACK
Stratford, Connecticut

ENGLISH-JOURNALISM

*N.A.A.C.P.; House Government;
Hilltop.*
"Scoop" . . . a daughter of the epi-
curian. "Eat, drink, and be merry
for tomorrow you may die." . . .
known for the carpet-sweeper col-
umn . . . by-lined weekly for the
Courier . . . a veritable budding
yeast cake.

FOOTPRINTS

(FRESHMAN YEAR)

"The largest freshman class *ever* in the history of Howard University", we entered, and took our place among the immortals, assured that there never had been, or ever would be, a class to equal ours. (Oh Brother!) . . . We survived (if you could call it that) a frantic week of placement and medical tests, English—physics—math—etc—etc—etc., and settled down to an "orderly" stay . . . We were proud of our white and blue beanies, but suffered with our brothers who were caught in "hair-raids" . . . The "ghost" walked in Truth Hall, and the ASTP walked all over the campus. Those were the days when the Engineers inhabited Clarke Hall. (Hubba! Hubba!) . . . Freshman women spilled over into Crandall; we met wonderful Miss Brown, and the celebrated Maryrose. There was snow, too, and the Engineers bombarded Truth Hall . . . Billy Eckstein was torn to shreds at one unforgettable freshman assembly . . . Our Joel Mack and Crawford Nixon were stars of the basketball team, we thought . . . To the ladies' dismay, spring, the greenest and prettiest of all springs, brought the departure of the Engineers. Women entered Clarke for the first time, and immediately the secret got out that the fourth floor was upheld by a *single* beam . . . Jean Drew was chosen Kappa Sweetheart . . . When the grass grew green (except behind the Law School), we elected officers: Guy Dobbs, President; Aileen Clarke, Vice-President; Jean Drew, Secretary; Buddy Gibbs, Treasurer . . . The Draft completely demoralized and deMANized us . . . Dean Thurman left . . . Miner Hall caught fire . . . and THE GRILL CLOSED FOR REPAIRS.



(SOPHOMORE YEAR)

As '48, the largest Freshman class *ever*, enrolled at Howard, we were promoted . . . We began our "Majors" (and Psychology 101 and 102 daunted many a brave heart) . . . The sophomore girls, under the dynamic direction of Ineta Kirtley, won Illumination Night with "Intermezzo," "I Couldn't Hear Nobody Pray," and "Summertime" (Doris Galliber on solo . . . (The seniors also ran.) . . . Probation lasted interminably, but Crescents, Ivies, Lampodas, Pyramids, Scrollers, Sphinxmen and Zeta and Sigma pledges crossed the burning sands and proudly wore the new adornments on their chests . . . Howard beat Lincoln (14-7) in the Thanksgiving "Rockbowl" Classic . . . Frazier Hall caught fire the same afternoon. (Margie B. and Milly G. were learning how to iron) . . . We lost more men; V-mail became the order of the day . . . Dr. Drew was awarded the Spingarn medal . . . "Profoundly Blue" was The Greatest House-dance, where "Paper Moon" proved Cole was really King . . . After its old quarters collapsed, the Post Office was moved from Ter-mite Towers to the Chemistry building . . . Trees were cut down along the long walk, and benches appeared in strategic flopping places to save the grass . . . The Howard Players revived with "Escape", but Frazier Hall's mad talent show was out of this world (probably the best place for it, too!) . . . VE day was proclaimed hysterically, after a few false alarms . . . The nation mourned Roosevelt's decease in April . . . Dr. Dykes departed . . . The First Fine Arts Festival was enthusiastically received . . . Miner Hall caught fire . . . and THE GRILL . . . CLOSED FOR REPAIRS.



(JUNIOR YEAR)

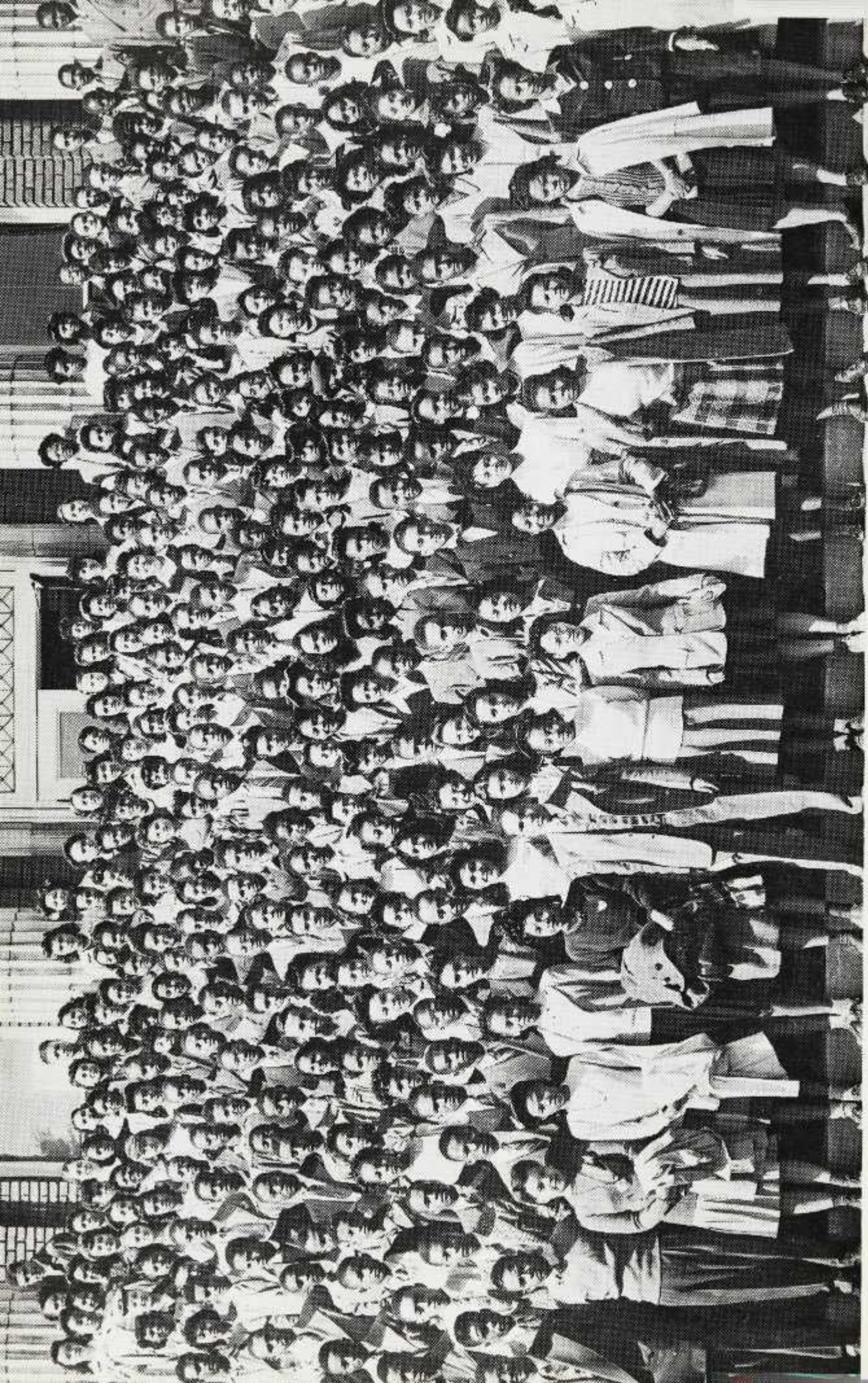
"The largest freshman class ever" found us thinking of the Junior Comprehensive and thanking Dr. Henry that we would have another chance . . . this year Howard had two gridiron queens long before Georgia had two governors: Gloria Garrett and Rosaline Murray reigned jointly at the Howard-Lincoln game . . . The boys blew out the lights in Cook Hall (cooking eight course meals on hot plates) . . . "Elizabeth the Queen" and "Hay Fever" gave Broadway something to think about (????) . . . Slacks, barred on campus, immediately became popular . . . Lovely Edith Jones wore the Omega crown . . . We celebrated Washington's birthday with a fire in Cook Hall . . . Dean Hastie was appointed governor of the Virgin Islands and delivered an inspiring address at Kappa Mu's initiation . . . Clarke Hall gave a boatride . . . and we took the senior girls for a Hay-ride . . . Rationing, for the most part, ended . . . Lovey Hammond was Alpha Queen . . . Dean Hawkins left for Hampton, and Mr. Daniels became keeper of Cook Hall's keys. Forty-six left us a guide for Senior Success . . . We began to hear rumors of a Student Union Building and agreed to send our great-grandchildren to enjoy it . . . Duke played at the Watergate . . . a new snack bar remained an idle fancy . . . The fine arts festival presented Thornton Wilder who liked our version of "Our Town" . . . More of the '47ers moved into the realm of the Greek Letters . . . Hazel Lee came, with her fine suits, from Spelman. And then there was Kilroy!!!

THE GRILL . . . CLOSED . . . BY STRIKE.

(SENIOR YEAR)

The veterans returned *en masse* as Howard's enrollment topped 5,500 . . . The "Sadie Hawkins Dance" was "real gone" . . . For the first time in history, "pre-registration was allowed (and Seniors were able to get in Biological Science before June) . . . Grades were posted too! (But forgotten code-numbers caused many a gray hair) . . . Carlyn Brown was crowned Omega Sweetheart, while Lovey Hammond was selected Gridiron Queen . . . Howard squelched Lincoln at Griffith Stadium (7-6) . . . The chimes were heard from the Library once more . . . "Life" came to Howard (and we received our note from one end of the world to the other) . . . Temporary (?) barracks were built for vets . . . We stood in line for everything, and we do mean everything . . . Late checks and cafeteria food brought on malnutrition . . . Miller House opened for off-campus girls . . . Basketball moved to Turner's Arena, and we placed 4th in the C.I.A.A. . . . In best revolutionary tradition, the first floors of Clarke and Miner Halls were painted . . . Eloise Hill danced her last gala Jabberwock before joining Pearl Primus . . . Mordecai "met" the students in Chapel and answered questions about Howard . . . The Howard Players and the Choir broadcast on Lincoln's Birthday over Washington's newest station . . . Emily Lippman became Alpha Queen in an elaborate ceremony at the new Music Hall . . . Stylus revived . . . Our last prom was the finest . . . and we were the largest graduating class to survive the rigors of four years . . . With fond memories behind us we hearkened to the wisdom of the old Pengarian philosopher who said . . . "All the world's an ironing board—Press On!!"





..... CLASS OF 1947 AS FRESHMEN IN '43

ABOVE THE CROWD

AILEEN CLARKE	<i>typical college student</i>	WENDELL FREELAND
RUTH ANN ROBINSON	<i>most dignified</i>	EDWARD MCDANIEL
SARAH SLACK	<i>most energetic</i>	WENDELL RAMEY
MARION DAVIS	<i>best athlete</i>	HANK HOUZE
CARLYN BROWN	<i>best dressed</i>	GRADY WELLS
EDITH JONES	<i>best looking</i>	COOKY GRAHAM
KITTY KEARNEY	<i>most popular</i>	TED BELL
GLORIA ALLEN	<i>best dancer</i>	JULIAN BRERETON
DORIS ARMSTRONG	<i>class cut-up</i>	TOM WHITING
SHIRLEY SMITH	<i>class politician</i>	HERMAN GIBSON
GRETCHEN JONES	<i>most efficient</i>	WILLIAM COLLIER
ERNESTINE KEMP	<i>wittiest</i>	VICTOR WALLACE
MYRA BALL	<i>most artistic</i>	JAMES McMILLAN
ALBERTA GREGG	<i>most naive</i>	WILLIAM JONES
JEANNE BARBEE	<i>most friendly</i>	JAMES JONES
PAT SHAW	<i>faculty delight</i>	BOB CLARKE
FERN GEORGES	<i>class scientist</i>	BILL GREENE
JUNE PLAYER	<i>class presser</i>	RAYMOND JONES
WALLETTE BOLDEN	<i>cutest</i>	DOUGLASS STAFFORD
INETA KIRTLEY	<i>most likely to succeed</i>	HERBERT EVANS
WILLADINE GRINNAGE	<i>class actors</i>	ROSS MILLER

DEAR CLEOPATRA . . .

Howard University
June 3, 1967

Dear Cleopatra,

Well, the '47 Reunion was a dynamic success, it also being the 100th anniversary of the school. A group of us were standing before the Chapel when the back door blew open and Dr. Mordecai Johnson was speaking: "Many graduates of this citadel of intellectuality have ventured into the land of darkness—the South, that is." The door blew shut and we could hear no more, but it was a real "welcome home".

We had started for the Student Union Building, which is nothing short of fabulous, when a huge chauffeured cadillac drove up and a green liveried footman jumped out quicker than you can say "press on" and opened the door for Congresswoman Walette Bolden. Walette told us of a few of the changes in Howard's administrative personnel: Dean Hawkin's little son, Tommy, is director of Cook Hall . . . and you couldn't forget Miss Hill, the former matron of Clarke. Well, she is happily married and a mother . . . That reminds me, I saw the Ballet Russe in New York last season, and Miss Latham billed as Louisarinsky Lathamvitch, danced the female lead in "Spectre de la Rose." (And in this age of jet propulsion and atomic energy, I found June Player walking down Fifth Avenue.)

We arrived at the Student Union Building decorated by the Myra Ball Art Students. (Myra found Carolyn Ashe in Norway last summer writing her latest "The Negro in Norway or One Cold Woman".) While we waited for the rest of the class in the sumptuous lounge of glass brick, terra cota, someone turned on the super atomic television set and Bill Gardner, Dean of Radio Commentators, gave us a vivid picture of the revolutionary situation of the Moon. Also, he said that Aileen Clarke rocketed to Paris to confer with the Interplanetary Congress of Stellar Peace to help regulate the world's colonial race to the moon . . . Just as we turned off the television set, a female voice screamed, "Oh, Darling" . . . It was Sarrette Slaque who is doing so well with her magazine, "Lush", that it is putting "Vogue" out of business because of its radiant model Carlyn Brown.

A group of teachers entered—Willadine Grinnage, Lovey Hammond, Eleanor Simmons, and Doris Armstrong (who is credited with the discovery of Esther Rollin's genius daughter . . . The child is only three, but she has published two volumes on the *Metaphysical and Philosophical Significance of Interplanetary Imperialism*.) . . . Kitty Kearney, and Jeanne Barbee's pictures were in the paper as two prominent matrons donating vast sums to the community chest. The same issue ran the Wendell Ramey trial. You know, Wendell started a revolution in Brazil by trying to import "Postum" . . . Drs. William Collier, Lloyd McCoy, Charles Collins and Valerian Smith came to the reunion straight from the golf course. Valerian was wearing a new pair of blue jeans . . . They say the Curl twins each have quadruplets, and vacationing in Atlantic City, they saw Edith Jones crowned Miss America of 1961.

Later we went into the new 50 million dollar auditorium to hear William Greene address the class. Then poetess Ernestine Kemp read her "Love and Grimey Ah's." The lines "You left me and then life was cold; why didn't you shut the door?" were particularly touching . . . The class received a telegram from Tom Whiting, owner of the "Sneaky Pete" Distillery which makes the whiskey that is a combination of "Four Roses," "Philadelphia," "Schenley's," and "Old Granddad" rolled into one dynamic brew called "DNE-KEE-WTSOL" (Lost Week End backwards) . . . Coach Houze of Notre Dame and Dr. Ed McDaniel, an industrial psychiatrist in a cornflake factory, were in heated discussion . . . Guy Dobbs played his new "Transcendental Boogie." . . . Buddy Gibbs, who has a wonderful way of "pressing" his maladjusted patients back to mental health, was talking about old times with ebullient Emily Lippman, who had Rita Drummond and hubby, Janice Whitby and little St. Elmo III, and Dr. Fleming Norris and wife, Penny, to her Beacon Hill house party.

Yes, it was *quite* a reunion and there were many hand shakes of farewell as the members of '47 climbed into the school station wagons to be driven to the station. Tempus Fugit.

Your devoted,

JULIUS

WE, THE SENIORS . . .

. . . being of sound mind if split personality, do soberly swear and affirm this to be our last will and testament:

Connie Kennedy leaves her ever-lasting and never-expiring pack of chewing gum to *Johnnie Mae Bennett* and *Kathy Billups*.

Doris Armstrong's reading ability is bequeathed to *Muriel Calloway*.

We leave *Peggy Johnson's* sweetness to *Flora Haley*, and *Sarah Slack's* good-natured, lovable gad-about self to "*Sug*" *Neal*.

Billy Jones' A's in psychology go to *any freshman* who is big enough to handle them.

To *Junky Joe Jensen* we leave *Billy Gardner's* mello-rooney-voutay personality.

Myra Ball leaves her talent with a paint brush to *Doris Williams*.

Till and *Oliver* leave their own little private dream world to *Cecile* and *Bromley*.

We will *Carlyn Brown's* voguish outfits to *Elena Knox*.

Aileen Clarke leaves her versatility to *Dottie Barbee*.

Corvine Johnston's sarcasm is left to *Jean Warrick*.

We leave *Bill Greene's* place in the freshman dorm to the *Rabble*, who will be here pressing freshmen until the green grass grows gray.

Kitty Kearney leaves her vim, vigor, and vitality to *Flora Dorsey*.

Louise Colvin's creative dancing is left to *Josephine Keene*.

We leave *Alberta Gregg's* demure composure to *Delores Warren* knowing that she will put it to good use.

Lester Florant leaves his job of radio repairing to *Ernest Smith*.

June Player leaves her "eyes" and her "walk" to *Gloria Threadgill*.

We leave *Jean Drew's* "coolness" to *Ynez Hall*.

Hank Houze leaves his physique to *all the*

veterans who don't get their checks on time and need some extra weight.

Emily Lippman leaves her sweet sophistication to *Roberta North*.

We leave *Lloyd McCoy's* polish, decorum, and urbanity to *all the hopeful mothers* who send their daughters to Howard husband-hunting.

Lovey Hammond leaves her talent and popularity to *Zaida Coles*.

William Collier leaves the twenty-five fingers that he has in every pie to *some underclassman* who may, with many wheaties breakfasts, measure up.

Herman Gibson leaves his "points of personal privilege" to *Maurice D. Bean*.

We leave *Walette Bolden's* beauty and brains to *Rose Esters*.

Jeanne Barbee and *Ernestine Kemp* endow *Alice Brantley* and *Evelyn Dunlap* with their willingness to console and advise veterans.

Llewellyn Goldsby leaves the "loving cup" filled brim-full with gleaming, golden brew to "*Rocky*".

We leave *Grace Warner's* charm and graciousness to *Tina Moore*.

To *Blanche Davis*, *Althea Byrd* leaves her name of "*Jezebel*".

To the *Post Office* we leave *RICHARD* who will keep the door open, always have stamps, and get specials out before we starve to death or great Uncle William kicks the bucket

"*Destiny's Class*", the inimitable '47, leaves to the *Junior class* that love of good fun, talent for hard work, and genuine rewarding fellowship which has typified our four years on the Hill.

I hereby affix my seal and affirm these statements

P. F. KILROY
Notary Public

My commission expires Dec. 99, 9999

"THOSE SACRED FEW WHO SHALL ETERNALLY REMAIN
IN THE ARCHIVES OF HISTORY"

ALDRICH ATKINS
WALLETTE BOLDEN
AILEEN B. CLARKE
WILLIAM H. COLLIER
BETTY J. DAVIS
WENDELL G. FREELAND
WILLIAM E. GREENE, JR.
WILLADINE M. GRINNAGE
LOVEY J. HAMMOND

LELA HAWKINS
HENRY O. HOUZE
WILLIAM V. JONES
J. ERNESTINE KEMP
EDWARD R. MCDANIEL
PATRICIA SHAW
ELEANOR SIMMONS
SHIRLEY M. SMITH
DOUGLASS STAFFORD

YVONNE TIBBS

WHO'S WHO

Who's Who in American Colleges and Universities is an annual compilation of biographies of distinguished students throughout the nation. The purpose of the project has been two-fold: First, to serve as an understanding honor in which a deserving student, after displaying merit in college and accomplishing his goals, would be given recognition without having to pay some fee—Second, to establish a reference volume of authoritative information on the great body of America's leading college students.

Requisites for membership are scholarship, character, leadership in extra-curricular activities, and potentiality for future usefulness to business and society. Seniors and students in advanced work are eligible. The biographies of the seniors whose names are listed above will appear in the 1946-47 edition of *Who's Who in American Colleges and Universities*.

the Organizations



STUDENT COUNCIL

The Student Council is composed of thirteen undergraduate students chosen in a general election, is directly responsible for the administration of the extra-curricular activities of the undergraduate student body. This involves the social, educational, recreational, and other interests of the students, and requires constant planning and supervision. Notable achievements of this year's Council have been its several enjoyable socials, the extensive program of gridiron activities during the Thanksgiving recess, its welfare program, the Student Leaders Retreat, Commencement boat ride, and Student Council prom.

OFFICERS

<i>President</i>	William E. Greene, Jr.
<i>Vice-President</i>	Shirley M. Smith
<i>Secretary</i>	Betty J. Meyers
<i>Treasurer</i>	William V. Jones



THE HILLTOP

The Voice of the University is our school top.





OFFICERS

<i>President</i>	William E. Greene, Jr.
<i>Recording Secretary</i>	Walter Patrice
<i>Corresponding Secretary</i>	Paul Beckman
<i>Treasurer</i>	Edgar Allen Toppin
<i>Advisor</i>	Edmund W. Gordon

MEN'S DORMITORY COUNCIL

The Men's Dormitory Council founded originally in 1932 as the Clarke Hall Council is the product of the efforts of the men of the campus to engender more spirit into the collegiate community. The council is composed of fourteen duly elected men residing in Cook Hall and the temporary dormitory units. Membership is its greatest source of never-ending tradition. The council seeks, to promote a more cultural atmosphere in Cook Hall and in the campus community, arate unit for instruction in business education. The students and the faculty student relationship, to foster high scholarship, to aid in Freshman orientation, and to foster in intramural activities. These aims have evidenced themselves through many activities, some of the more outstanding are: annual social functions, Talent Night, Faculty-Student Smoker, Men's Retreat, Campus Leaders Retreat, Supper Forums, Record Hours, Mother's Day Weekend, Faculty Wives Reception, and Farewell to Seniors.

The Council boasts of its most efficient subsidiary groups which are the Tutorial Staff and the Freshman Advisory Staff.



OFFICERS

Shirley Marie Smith.....	<i>President</i>
A'Lelia Perry.....	<i>Vice-President</i>
Alberta Gregg.....	<i>Secretary</i>
Harold C. Hamilton.....	<i>Treasurer</i>

UNITED NATIONS

The American Association for United Nations was founded at Howard University and many other colleges in 1945 to help college students better understand the charter and their responsibilities to world organization.

The purpose of the Howard Chapter is to secure, to interpret, and to disseminate literature from or relative to the UN to Howard students, to keep abreast of current world affairs, to endeavor to understand the approach and viewpoints of other nations and in general to support the ideals of the UN.

Through a column in the HILLTOP, "Your Stake in World Affairs," the United Nations has attempted to keep the students abreast of UN activities and world affairs. This year the organization sent members to Flushing Meadows and Lake Success in New York to attend sessions of the UN.

Under the able guidance of Dr. Rayford Logan and Dr. Merze Tate, sponsors, the organization promises to continue to play its part in keeping Howard students interested in the organization for the establishment of world peace.

THE HOWARD PLAYERS

W. M. Kiplinger, in his book, *Washington Is Like That*, points out, "There is no Negro drama in Washington except for some amateur performances cultivated by Howard University." These performances are the work of the Howard Players, leading dramatic organization on the "hill." The Players are talented and versatile young people who have won for themselves an enviable position as one of the best non-professional Negro acting guilds in the country. In the past the Players have been capably directed by James Butcher; now they are sponsored by the distinguished Dr. Anne Cook. The Players present at least two big productions annually as well as four or five skits. Notable "hits" of previous seasons have been "Our Town," "Berkeley Square," "Winterset," and "Elizabeth and Essex." At present the Players are rehearsing "You Can't Take It With You."

OFFICERS

William Collier	President
Walette Bolden	Vice-President
Muriel Calloway	Secretary
Walter Hall	Treasurer
Patricia Shaw	Business Manager



FUTURE TEACHERS OF AMERICA

Kelly Miller Chapter of FTA, which is named for Dr. Kelly Miller who served at Howard for over forty years, was founded in 1943. The purposes of FTA, a movement which grew out of the National Education Association, are:

1. To develop among young people who are preparing to be teachers an organization which shall be an integral part of state and national education associations. 2. To acquaint teachers in training with the history, ethics, and program of the organized teaching profession. 3. To give teachers in training practical experience in working together in a democratic way on the problems of the profession and the community. 4. To interest the best young men and women in education as a lifelong career. 5. To encourage selection of persons admitted to schools which prepare teachers, with emphasis on both character and scholarship. 6. To seek through the dissemination of information and through higher standards of preparation to bring teacher supply and demand into a reasonable balance.

OFFICERS

Alberta Gregg	<i>President</i>
Doris Haizlip	<i>Vice-President</i>
Juanita Turner	<i>Recording Secretary</i>
Essie Baylor	<i>Corresponding Secretary</i>
Paulyne Thompson	<i>Treasurer</i>
Agatha Oliver	<i>Librarian</i>





OFFICERS

President Lela Hawkins
Vice-President Judith Hedgepeth
Secretary Jean Drew

FELLOWSHIP COUNCIL

The Fellowship Council seeks to create a feeling of fellowship and goodwill among the members of the university campus and to promote activities that fill a definite need on the campus. Outstanding activities sponsored by the council have been: exchange student visits with Bucknell, Columbia, Pennsylvania State, Vassar, and Connecticut Wesleyan; the annual Student-Faculty Dinner; Get Acquainted Week; conferences; monthly birthday parties for old students; and Faculty Open-House. The activities are delegated to specific committees within the organization. Former Dean Howard Thurman, an outstanding member of the council, had a dream in 1937; that dream became the Fellowship Council.



WALTER H. BROOKS CLUB

The club is composed of those students and faculty members who are of the Baptist faith. The meetings are held twice a month, and various interesting speakers are presented. This is one of the organizations which assist the students in making their church life a seven day affair.

TUTORIAL STAFF

The Tutorial Staff of the Men's Dormitory Council was founded in 1932 by Thomas E. Hawkins now Dean of Men at Hampton Institute. The staff is purely voluntary, these men feeling that they would like to help their fellow students. The staff is composed of thirty-eight young men and there is also a female staff. The mortality rate has decreased greatly, since its initiation, and they hope to work on a larger plain in the coming years.

OFFICERS

William H. Collier	<i>Chairman</i>
Willis Davis	<i>Assistant</i>
Joseph Bell	<i>Secretary</i>



AMERICAN VETERANS COMMITTEE

The American Veterans Committee is one of the more progressive and forward moving organizations. Made up of younger veterans, of World War II, it is fighting for the principles of Democracy upon which our nation was founded . . . Its motto: "Citizens first, Veterans second" is evident of the A.V.C.'s concern in helping to build a better world.

OFFICERS

<i>Chairman</i>	Wendell Freeland
<i>Assistant</i>	Herman Gibson
<i>Treasurer</i>	Theodore Bell





N. A. A. C. P.

The Howard University Youth Council of the N.A.A.C.P. received its charter January 4, 1943. Its objects are to inform youth of the problems affecting Negroes; to promote the political, economic, educational and social betterment of the Negroes; and to stimulate an appreciation of the Negro.

In the early years of its development, the organization launched several campaigns against the discriminatory policies of the Five and Ten's, Department stores, and the Taxi Cab system here in Washington, D. C.

In November 1946, two delegates were sent to the Eighth Annual Conference which was held in New Orleans. The conference for the following year will be held in Houston, Texas. Incoming officers are President—Fred Landers; Vice-President—Dorothy Dawson; Secretary—Lois Harris; Corresponding Secretary—Averada Pulley; and Treasurer—Loxie Williams. It is hoped that the N.A.A.C.P., one of the greatest organizations on Howard University's Campus, under the able leadership of Dr. Vincent Brown and the new officers will continue to advance its fight for equal opportunity for the Negro.



N. A. A. C. P.

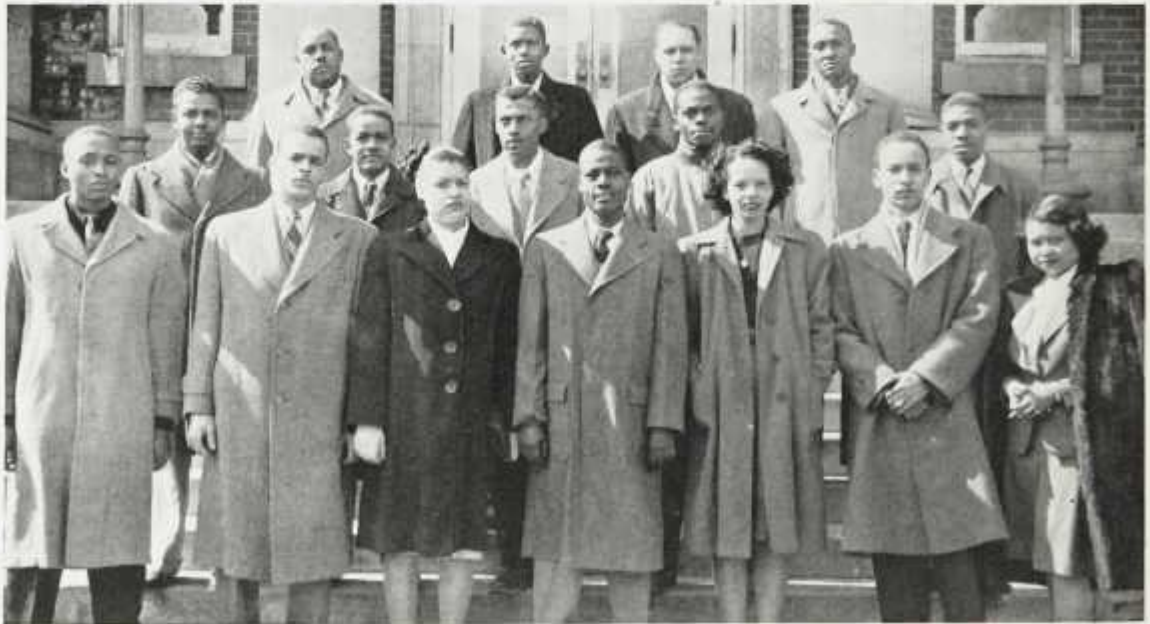
OFFICERS

<i>President</i>	Beverly J. Chandler
<i>Vice-President</i>	Fred Landers
<i>Recording Secretary</i>	Katherine V. Kearney
<i>Corresponding Secretary</i>	Jean E. Drew
<i>Treasurer</i>	Doris E. Armstrong
<i>Faculty Sponsor</i>	Dr. Vincent Brown

COMMERCE CLUB

OFFICERS

Julian B. P. Brereton.....	<i>President</i>
Frank Johnson.....	<i>Vice-President</i>
Mae Mitchell.....	<i>Secretary</i>
Leon Pack.....	<i>Treasurer</i>
J. L. Tucker.....	<i>Chairman of Forum Committee</i>
Freddie L. Parker.....	<i>Chairman of Social Committee</i>
Marcellus W. Evans.....	<i>Chairman of Survey Committee</i>
Leon M. Banks.....	<i>Chairman of Publicity Committee</i>
Professor H. N. Fitzhugh.....	<i>Faculty Sponsor</i>



COMMERCE CLUB

In 1928 the Department of Commerce and Finance was established as a separate unit for instruction in business education. The students and the faculty felt the need for an organization where they could make use of the subjects being taught in their classes, express their own ideas and discuss the everchanging trends in the nations business.

Too little emphasis should not be placed upon the desirable results between faculty and students in club meetings and other phases of the execution of the club program. In this manner there is brought to light early in the students' college career, certain individual capacities or interest that otherwise go unnoticed and undeveloped.

As strange as it seems the club has functioned 18 years without a charter or a written constitution. The Unwritten constitution of the club is based on the good will of the students and faculty members that is the result of doing jobs planned by the organization.





OFFICERS

<i>President</i>	Edward McDaniel
<i>Vice-President</i>	William V. Jones
<i>Recording Secretary</i>	Edward Jackson
<i>Financial Secretary</i>	Theodore Bell
<i>Dean of Pledges</i>	T. Walter Johnson

ΑΦΑ

On December 4, 1906, the concept of Negro brotherhood was for the first time given material expression in the form of Alpha Chapter of Alpha Phi Alpha Fraternity at Cornell. This fact is significant, for it represents a commitment . . . an assumption on the part of Alpha Phi Alpha of the responsibility of always leading the race. It is this interpretation of the founding of the first chapter which has made Alpha a brotherhood of leaders. It is this doctrine, preached in each of the 181 chapters into which the organization has grown, which is responsible for Alpha men being in the vanguard in every field of human endeavor.

Beta Chapter was founded at Howard University on December 20, 1907, the second chapter of the fraternity and the first on a Negro campus. Since that day Beta has adhered religiously to the fundamental precepts of Alpha Phi Alpha by supplying leaders to the campus community and to the race at large.



SPHINX CLUB

The Sphinx Club of Beta Chapter of Alpha Phi Alpha is a brief stopping place where "the members of the fraternity in theory attempt to study a man's character, to get acquainted with him, and to let him get acquainted with them, in order that both the fraternity and the Sphinxman may decide intelligently whether or not either wishes to continue the friendship and cement it into brotherhood. As a part of its activity program the club is required to sponsor some project and a smoker for the fraternity, and to acquire a detailed knowledge and thorough understanding of the history, aims, and ideals of Alpha Phi Alpha. The officers of the present club, consisting of some forty odd members feature Durward Archer, President; Gordon Madison, Vice-President; Randolph Bromery, Treasurer; Charles Jones, Secretary, and Edward Coleman, Sergeant-at-Arms.

KΑΨ

Xi Chapter, Kappa Alpha Psi Fraternity was established on the Howard University campus in 1920. This fraternity had its origin at Indiana University, and this chapter at Howard was one of the first manifestations of eastward expansion. Xi Chapter has made a real endeavor to contribute tangibly to the society which has nurtured it. Among these contributions that dot the history of the chapter are (1) the Kappa Cup, awarded annually to the student in the freshman class maintaining the highest accumulative average over the freshman year, and (2) the Basketball Trophy, awarded annually to the player on the Howard varsity team who manifested most completely those attributes contingent to better athletics and athletic achievement.

There is a definite need for social, religious, asthetic, and educational edification evidenced on every college campus, and Kappa, being cognizant of these needs, has through the years of its existence on this campus attempted to offer program along these lines that would best fit the needs of the students.

OFFICERS

Herman Gibson	<i>Polemarch</i>
Alvin Batiste	<i>Vice Polemarch</i>
James Wentz	<i>Keeper of Exchequer</i>
Melvin Barber	<i>Keeper of Records</i>
Alphonse Peterson	<i>Strategus</i>
Harrison Duke	<i>Dean of Pledges</i>



SCROLLER CLUB

The Scroller Club is an affiliate organization of Kappa Alpha Psi and is conceived to give intellectual play to prospects for entrance into the fraternity proper.

While in the Scroller Club the pledgee must prove himself qualified for becoming a member in the Kappa Alpha Psi Fraternity. Here the rudiments of parliamentary procedure along with some of the instrumental ideals of the fraternity are conveyed to the pledgees through the medium of the fraternity pledge commission.

The colors of the Scroller Club are purple and gold. The flower is the white carnation.





OFFICERS

Charles E. Williams.....	<i>Basileus</i>
John B. Garrett, Jr.....	<i>Vice Basileus</i>
Robert N. Chase.....	<i>Keeper of Records and Seal</i>
Herman F. Stamps, Jr.....	<i>Keeper of Finances</i>
William E. Green, Jr.....	<i>Dean of Pledges</i>
Valerian E. Smith.....	<i>Keeper of Peace</i>
R. Harry Paul	<i>Chaplain</i>

ΩΨΦ

*"The Crest and Crowning of all good,
Life's final star is brotherhood . . ."*

With careful thought, arduous work, and stern action, Omega Psi Phi has instituted as its national program—SOCIAL ACTION FOR SOCIAL WELFARE. During these troubled years following the war, Omega once again pledges itself to greater support of social progress and brotherhood among men.

"You do not need to fight or promote counter-revolution . . . All that any far-sighted and perceptive government needs to do is to clean house; to provide a fair standard of living, some chance and some hopes for the majority of its citizens."

LeLand Stowe

From *WHILE TIME REMAINS*

Alpha Chapter, likewise is perfecting its program of Social Action for Social Welfare in endeavoring to bring about better harmony among the students on the campus.



OFFICERS

<i>President</i>	Matthew Hammer
<i>Vice-President</i>	J. Willard Harris
<i>Secretary</i>	George H. Jones
<i>Treasurer</i>	Vernon G. Baker
<i>Recording Secretary</i>	Calvin C. Campbell
<i>Parliamentarian</i>	George H. Elliott, III
<i>Chaplain</i>	Charles Lawrence
<i>Keeper of Peace</i>	LeRoy Townsel, Jr.

LAMPODAS CLUB

The Lampodas Club is in essence a preliminary step to entrance into the ultimate state of brotherhood in Omega Psi Phi. The pledge club of Alpha Chapter is a complete administrative body unto itself. The demands of the pledge club provide an adequate test of the personal qualities of the pledges; thereby facilitating the selection of men for service in the brotherhood of the fraternity. It is the desire of every man of the Lampodas Club to cross the burning sands of Omega with complete success. We hope to join the ranks of Omega men in their stand for racial and national progress; in short, for the progress of the world. We salute the future, stressing brotherhood—the brotherhood of man throughout the world.

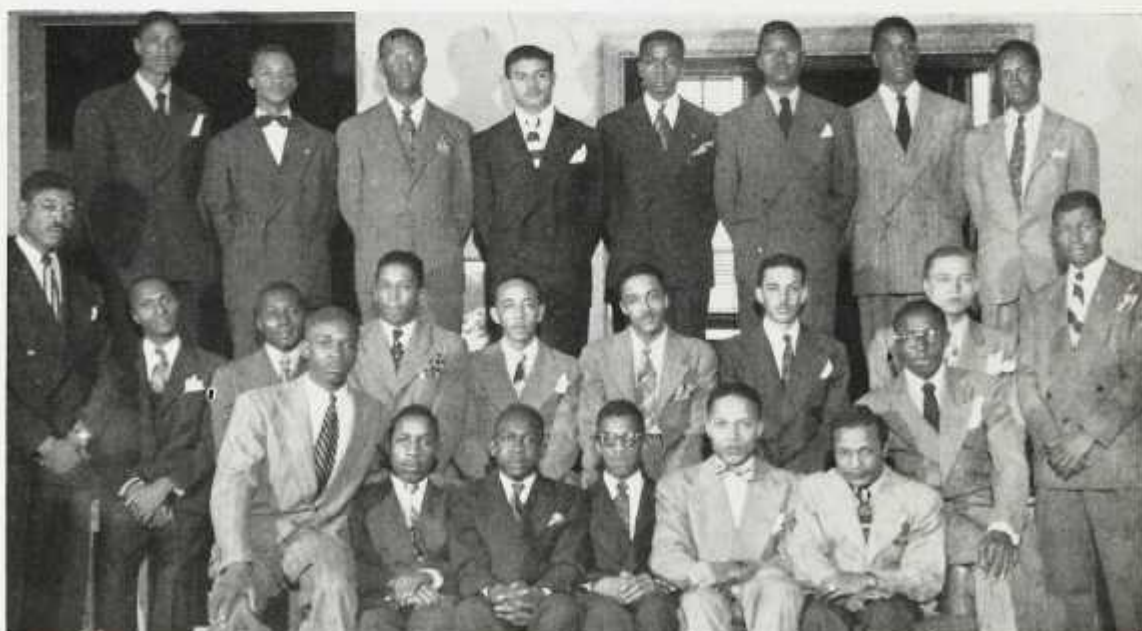
"We face the future with faith in God, ourselves, and humanity."

ΦΒΣ

The Phi Beta Sigma Fraternity was founded by Dr. A. Langston Taylor at Howard University in 1914. Phi Beta Sigma Fraternity is the first Greek letter organization to establish a chapter south of Virginia, and is exemplified by the lives of these Fraters: Alaine Leroy Locke, George Washington Carver, James K. Johnson, Dr. R. A. Billings, Dr. George A. Parker, and Dr. Lawrence D. Reddick.

OFFICERS

Alphonso Stanley	<i>President</i>
Elmer Herring	<i>Recording Secretary</i>
Herbert Blackman	<i>Corresponding Secretary</i>
Clive Jackson	<i>Treasurer</i>
Arthur Early	<i>Vice-President</i>
Arthur Golden	<i>Dean of Pledges</i>
Eugene Tillman	<i>Social Committee Chairman</i>



CRESCENT CLUB

The Crescent Club of Phi Beta Sigma was organized in 1920. It was set up for the purpose of orientating future members of the fraternity in its policies and programs. Of course, not the least of its purposes is to instill in the neophyte that intangible feeling known as the "Sigma Spirit."

OFFICERS

Charles S. Wright	<i>President</i>
Thomas Clifford	<i>Vice-President</i>
Leroy Young	<i>Secretary</i>
William Miller	<i>Treasurer</i>





OFFICERS

Shirley Marie Smith	<i>Basileus</i>
Corinne Johnston	<i>Anti-Basileus</i>
Dorothy Barbee	<i>Tamiochus</i>
Gloria Williams	<i>Grammateus</i>
Betty Myers	<i>Epistoleus</i>
Norma McEachron	<i>Hodegus</i>
Jean Curl	<i>Parliamentarian</i>
Joan Curl	<i>Ivy Leaf Reporter</i>
Doris Hobson	<i>Sentinel</i>

AKA

Alpha Kappa Alpha, the first Negro Sorority, was founded in the year 1908 at Howard University.

The program of Alpha Chapter from its beginning to the present day has been to foster friendships, to cultivate high ethical standards among Negro college women, to promote high scholastic standards, to enforce a common bond among its members, and to produce efficient leaders who, after college, will continue their well-rounded activities.

Two of the most outstanding projects of the Sorority are the Mississippi Health Project, which strives to help the underprivileged of the rural South, and the Non-Partisan Council, which aids through lobbying to secure equality for the Negro. The funds contributed to these projects this year were received by the fall quarter probates.



OFFICERS

Carolyn Dixon	<i>President</i>
Annabelle Greene	<i>Vice-President</i>
Doris Heisser	<i>Recording Secretary</i>
Marie Smith	<i>Corresponding Secretary</i>
Nancy Reynolds	
.....	<i>Social Chairmen</i>
Alfreida Huggins	

IVY LEAF CLUB

The Ivy Leaf Club is composed of pledges of the Alpha Kappa Alpha Sorority. These persons have shown their eligibility for membership through their scholarship and participation in numerous activities of a social, educational and cultural nature. The aims of the pledge club are to foster finer womanhood, and to emphasize truth, straightforwardness, and worthwhile achievement. With "faith in God" as their motto, they strive to wear a pin on their sweaters surrounded with pearls to show that they are A.K.A.



The Delta Sigma Theta Sorority was founded in 1913 by a group of women at Howard University. These women had for their paramount objective in organizing the sisterhood the development of the ideals of finest womanhood: culture, scholarship, personality, leadership, and integrity.

Through our National Library Project, Delta sorors are involved in a large scale endeavor to provide library facilities for Negro youth in underprivileged areas.

Delta girls are found in positions of influence and leadership in every facet of campus activity . . . This year Alpha Chapter has made to the campus community educational, civic, and social contributions of interest and value. Noteworthy among these are the establishment of a library for Officer Cowan's Junior Police Corps; the reward of a one hundred dollar scholarship award; a gala Jabberwock; with a *Showboat* theme; an annual winter formal, *Winter Wonderland*; and the traditional May Week celebration consisting of a Twilight Hour, Pan-Hellenic Banquet, forum, Pyramid Night, and the unique Sunrise Dance.

OFFICERS

Walette C. Bolden	<i>President</i>
Carolyn Ashe	<i>Vice-President</i>
Virginia Jervay	<i>Recording Secretary</i>
Lucille Anderson	<i>Corresponding Secretary</i>
Janice Whitby	<i>Treasurer</i>
Gloria Tappscott	<i>Sergeant-at-Arms</i>
Willadine Grinnage	<i>Dean of Pledges</i>



PYRAMID CLUB

To achieve greatness in all the noble aspirations of life—ethical character, scholarship and worthwhile accomplishment—is a goal of the women of Delta Sigma Theta Sorority. The pledges, the Pyramids, use of the medium of the pledge club to develop an appreciation of the ideals of its affiliate organization. The Pyramids are select women of the campus chosen with a firm belief in their potential possibilities of growth. All projects and activities are geared to aid them as well as the university community develop a deeper faith and understanding of the problems of the day and a hope for progressivism in all fields of worthy endeavor.

OFFICERS

Agatha Lawson	<i>President</i>
Marguerite Dodson	<i>Secretary</i>
Libby Chamberlain	<i>Treasurer</i>





KAPPA MU HONOR SOCIETY

Founded with the primary purpose of emphasizing sound scholarship, the Kappa Mu Honorary Society was organized in October of 1923.

The secondary object of this organization is to confer upon those students of the academic schools whose marked scholastic ability has proved them worthy of membership—a badge of distinction and honor. Entrance into Kappa Mu is held as one of the highest honors a student may attain at the University. It is a reward for meritorious achievement and academic excellence.



GERMAN CLUB

The German Club was organized about fifteen years ago and glided along. During the war the organization almost died but a few interested members held on. The war is over and "Der Deutsche Verein" has been revived. It is primarily interested in learning more about German culture, and the members conduct meetings in German. Guest speakers, musicals, and forums, make up the usual agenda.

HOME ECONOMICS CLUB

The Home Economics Club is an organization of Home Economics majors who have joined together in common interest. The girls have the Home Economics house where they live for one year to learn careful planning and budgeting. It is an enjoyable organization as well as an educational unit.



THE

HOWARD

SWINGMASTERS



MENTOR



These young ladies are chosen by the sophomore and senior resident women and the Dean of Women's staff to guide and assist the freshmen during their trying year of adjustment to college living. It is a distinct honor to be selected, and the Mentors experience personality development through their work.

MONITORS

The Monitors are a group of young men who are in charge of the Temporary Veterans' Dormitory. A "swell bunch", they manage to maintain an atmosphere of quiet, conducive to study, in these dorms.



our Sports



FOOTBALL



The 1946 Howard Bisons' football season began with a record of 125 candidates reporting for pre-season practice sessions. With only seven seasoned veterans returning, Head Coach Eddie Jackson and his staff of eight assistants had a difficult task in selecting a starting lineup . . . The Bisons had four capable men in position, but the big question that faced the coaches was whether the many ex-servicemen who had been outstanding stars before entering the service would retain the fight and football color that they displayed under pressure.

The football season of 1946 closed with the Howard eleven having a season's record of six wins and two losses to rank fourth in conference standing. All-CIAA mentions were given to Captain Hank Houze; Tony Wallace, back; Melvin Marshall, center; John Fitzgerald, tackle; and guards Tommy Pogue and Bill Toles . . . Howard has finally begun to climb back into CIAA football glory which many feel will be epitomized within the next few years.



P-A-S-S!!





TRACK



The 1946 CIAA Track and Field Champions, the first at Howard in twenty-one years, started what looks to be another championship team by engaging in cross country running. In their only competitive engagement, the Howard harriers dominated the annual YMCA run capturing seven of the first ten places.

Although handicapped by the lack of adequate facilities the Bisons engaged in two indoor meets and fared well. Howard is on the upswing in track and this year's team with its variety of talent promises to place Howard high in the national collegiate track standings.



Tri-Collegiate Meet, Spring of 1946



Grady Wells and Jupiter, Our Track Stars



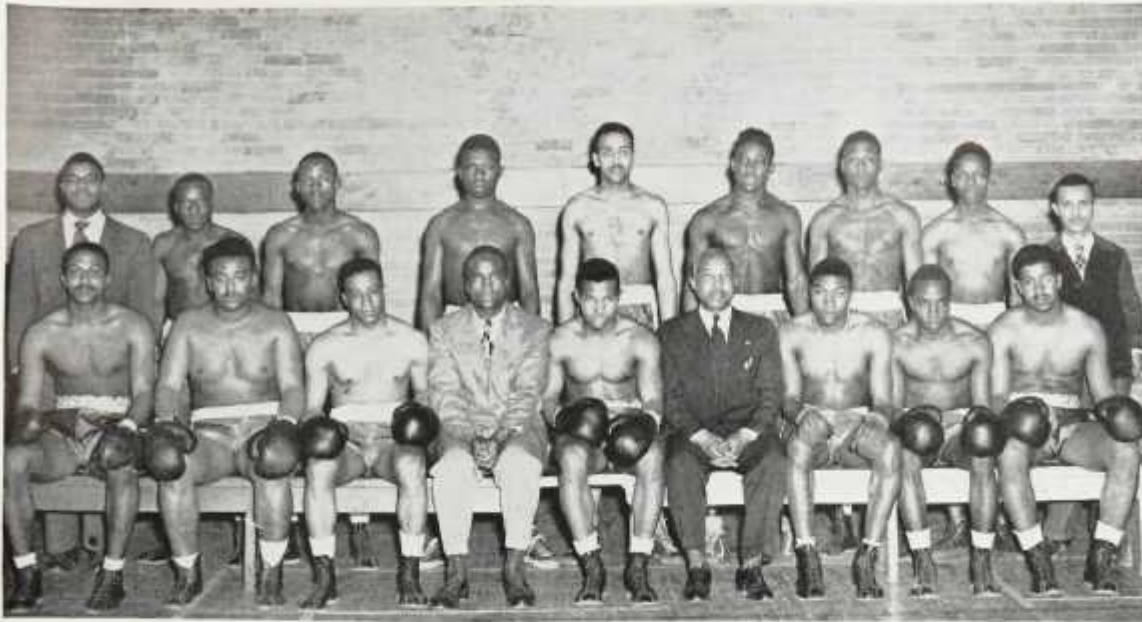


BASKETBALL

As the practice sessions for the 1946-47 cage season opened, seventy-five aspirants reported to Coach Eddie Jackson. With the nucleus of seven veterans from last season and several highly touted newcomers, the squad showed promises of being the Bison's strongest hardwood aggregation in years. The squad was cut to thirty men consisting of a varsity team and a junior varsity, the first in many years.

During the regular season, the Bison hoopsters won eight games while losing ten conference games to end up in fifth place under the Dickerson rating system. Although they ever achieved a .500 games average, the Bisons were perhaps the most feared cage quintet in the contest. On numerous occasion during the course of a game the coaches would substitute in an effort to find a working combination. Howard's record is even greater in that five of its defeats were by less than four points.

Pacing the squad was freshman Frank Booth who scored 243 points for an average of 13.5 points per game. Other outstanding performers were co-captains Ralph Burroughs and Joe Evans, Leon Byrant, Courtland Thompson, Terry Coleman, Roland Jones, Walter Wright, Joe Duckett, and Oliver Ellis. In the CIAA 2nd Annual Basketball Tournament, the Howard cagers ended up in fourth position. Howardites have great hopes for a bright 1947-48 season when all of this year's squad will return.



BOXING AND WRESTLING

The year 1946-47 saw Boxing and Wrestling return as a major sport in Howard athletics. Coached by James T. Chambers and James Parrish, the Bison mittmen ended their season as CIAA team champions, including three individual conference champions.

SWIMMING

This season's swimming schedule consisted of seven meets, four of which were with Non-CIAA schools. Under Coach Tom Johnson, the Howard natators showed well against teams beyond their class, establishing an undefeated CIAA record:



GIRLS' SPORTS



The Physical Education Department for Women performs the twofold duty of offering courses in health, physical education, and recreation for the entire student body, and of administering a special curriculum for women who are majoring in this field. The department realizes the importance of physical education, health, and recreation in a college curriculum, especially during the post-war days of rehabilitation and social reorganization.



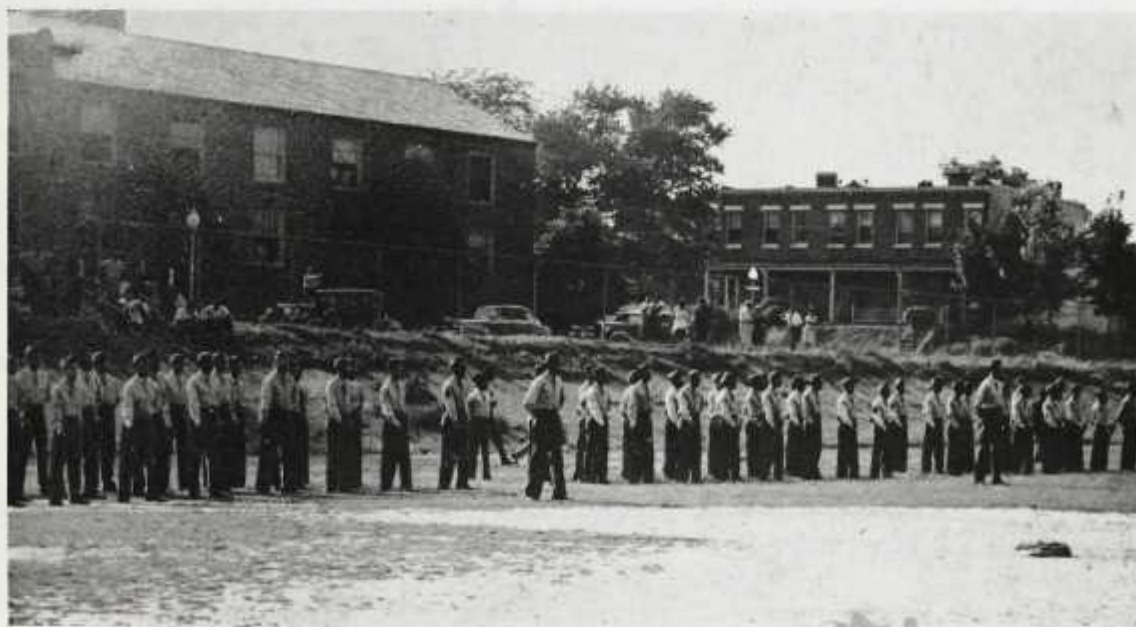


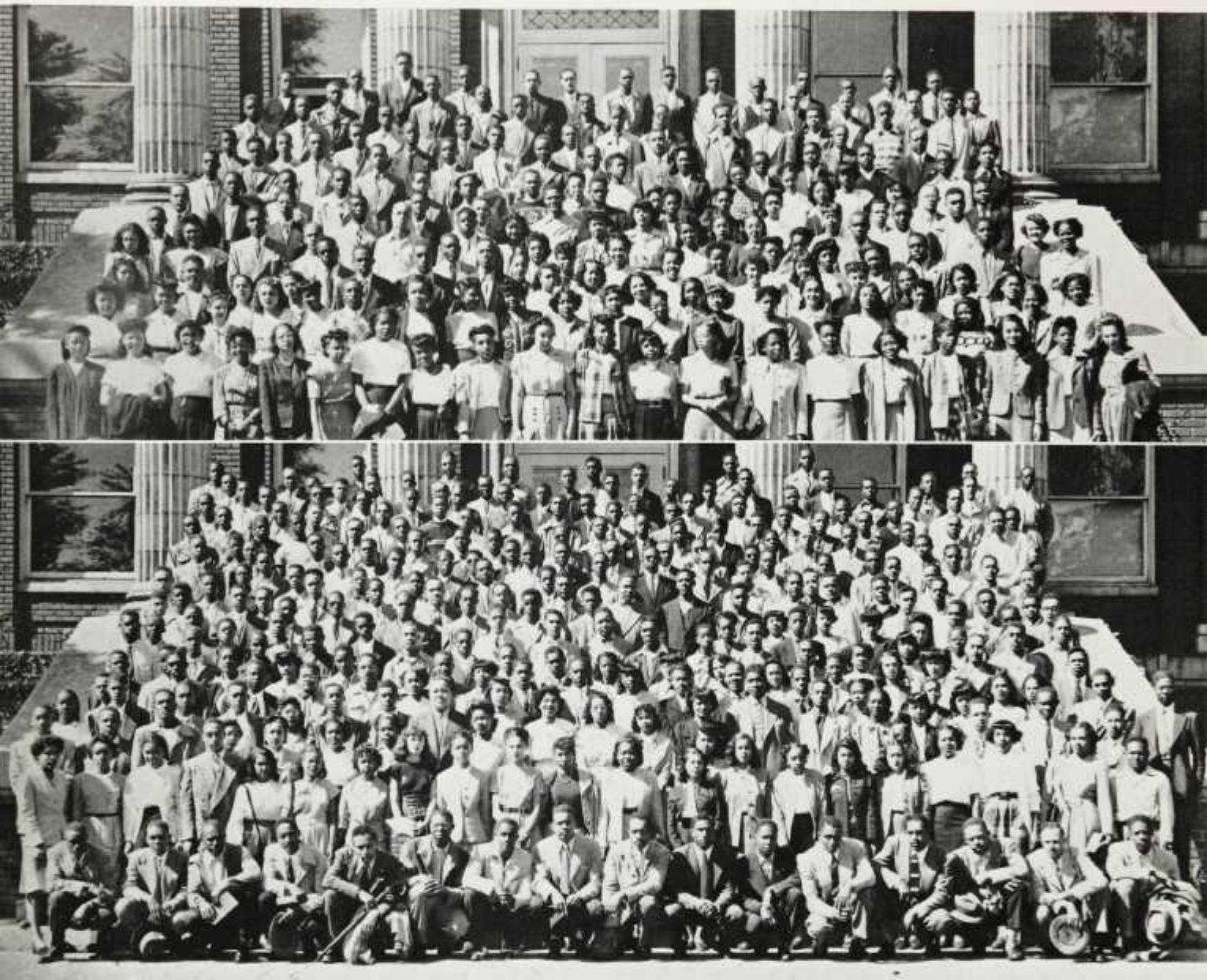
Company A—R. O. T. C.

ROTC

Extra-curricular features of the department this year included the rifle team and the annual ROTC military ball. This year, for the first time, the cadets will elect a co-ed colonel to serve as hostess at the social functions of the unit, and receive the review on ROTC Day.

R. O. T. C. Battalion





THE FRESHMEN

Pictured above and on the following page are the seventeen hundred members of the largest Freshman Class ever to enter Howard University. Drawing its membership from every state of the union, six island possessions and twenty-three foreign countries, the Freshman Class of Fifty constitutes more than one third of the total enrollment in the Liberal Arts Undergraduate School. Certainly, then, there is had among this group a valid cross section of American Youth of our time.

Doubtlessly there would be expected some means of organization within this group and, of course, there is. After having been directed by a Steering Committee under the auspices of the Student Council during the first quarter and two weeks of the second quarter, the Freshman Class was organized. The prime purpose was the correlation of the interests of the class through a series of intellectual and social functions. At the time of publication, the Freshman Class of Fifty is striving to realize this goal.



OFFICERS

<i>President</i>	John C. Norman
<i>Vice-President</i>	Maurice Bean
<i>Secretary</i>	Katherine Billups
<i>Treasurer</i>	Sanford Neal

CLASS OF 1950





CLASS OF 1949

In September 1945, Howard University experienced something new in the form of the Class of '49. Brought together by common problems, the class readily developed into an energetic unit.

It elected its officers this year in the persons of Ross Clark, president, Trudie Woods, vice president, Mary Barker, secretary, and Minna Anne Williams, treasurer.

In its first year the class climaxed its activities with a very successful class prom. In its second year the class broke tradition by being the most active class of sophomores seen on Howard's campus in many years. Among its activities '49 takes honors for presenting the first weekly movies to the student body, issuing a well constructed class paper, and maintaining superb class organization.

ALMA MATER

*Reared against the eastern sky
Proudly there on Hilltop high,
Far above the lake so blue
Stands old Howard firm and true,
There she stands for truth and right,
Sending forth her rays of light,
Clad in robes of majesty
O Howard we sing of thee.*

*Be thou still our guide and stay
Leading us from day to day;
Make us true and real and strong,
Ever bold to battle wrong
When from thee we've gone away,
May we strive for thee each day.
As we sail life's rugged sea
O Howard will sing of thee.*











VETERAN
DRAFTED
IN World III?
War
YOU GET - Officers Uniform
\$ 20 per month and credit
toward **GRADUATION**



IN GRATITUDE

This section of the *BISON* has been reserved to compensate feebly for the co-operation given the staff by constituents of our class, the school, and outside interests in hopes that they would be able to assist in making a bigger and better *BISON*. To them, we are indeed grateful! The job, though certainly not easy, has been an enjoyable one. We discovered new abilities and new traits that will lead to fond memories that could come only through such an experience as working with *THE BISON*.

It is practically impossible to include everyone in such a volume as this; however, we appreciate all assistance given. Here are our citations:

A bouquet to Mr. Brown, the photographer, who is well versed in the art of toying with photographic plates and those protoplasmic countenances which we so proudly cherish.

Sincerest thanks to Mr. Auzenne whose suavity and legalistic ability has been an integral part of the development of progressive student life at Howard.

Gratitude to Miss Louise Latham for her motherly consideration, and to the personnel of Truth Hall.

Orchids to Hazel F. Lee, Emily Lippman, June Player, Marion G. Davis, Grace Warner, Louise Colvin, Essie Baylor, Ruth Ann Robinson, June Flippin, Chrysanthea DuPree, Alberta Gregg, Ross Miller, and William Gardner.



PATRONS

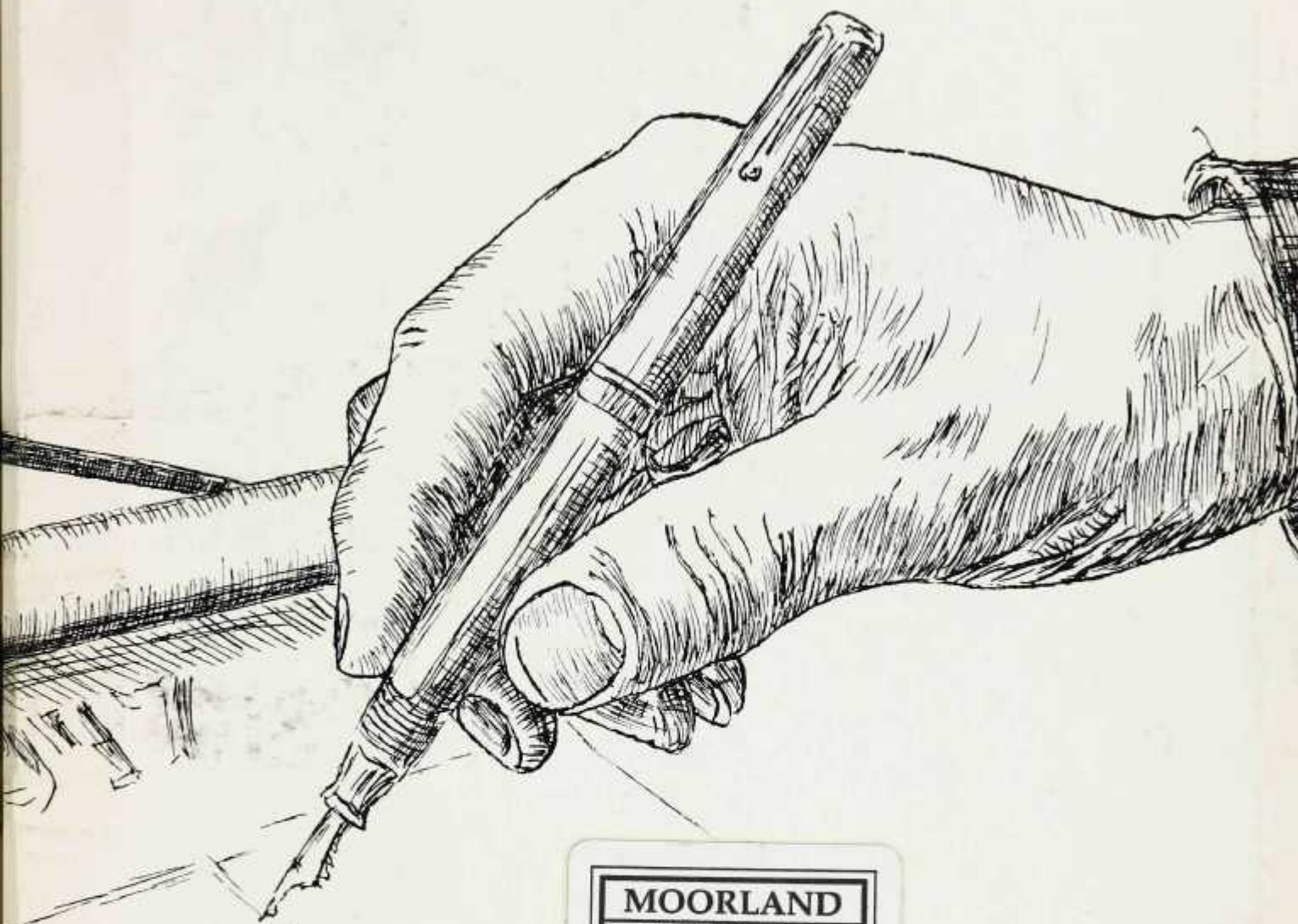
Miss Freda Archie
 Mr. and Mrs. Frank Armstead
 Mr. and Mrs. George C. Armstrong
 Mr. Charles M. Ashe
 Mrs. Louise Ashe
 Miss Jeanne Ball
 Mr. and Mrs. Wilfred R. Ball
 Mr. and Mrs. R. R. Baird
 Clifton Bell
 Mr. and Mrs. John Bell
 Navarro Bell
 Dr. and Mrs. Leon A. Berry
 Mr. and Mrs. B. H. Beckham
 Mr. and Mrs. Carl Herman Bradford
 Mr. and Mrs. Charles K. Branker
 Mr. Archie G. Brereton
 Mr. Marion Brooks
 Mr. A. H. Brown, Jr.
 Mrs. Virginia B. Brown
 Mr. John M. Butler
 Miss Vera Carter
 Mr. and Mrs. L. W. Carson
 Mr. Oscar J. Catlin
 Dr. and Mrs. Edward M. Chandler
 Dr. and Mrs. John Chenault
 Mr. and Mrs. Joseph G. Childs
 Mr. Charles O. Chisley
 Dr. Johann Cispari
 Mr. and Mrs. R. M. Clark
 Mr. and Mrs. Landry Clemons
 Mrs. A. N. Cohen
 Edward L. Coleman
 Mr. and Mrs. George P. Coleman
 Lois H. Coleman
 Mr. and Mrs. M. M. Coleman
 Mr. and Mrs. Albert Collier, II
 Dr. and Mrs. A. H. Collier
 Miss Inez Collier
 Mr. William H. Collier
 Mr. and Mrs. Lewis S. Colvin
 Mrs. Robert Coleman
 Dr. Anne Cook
 Dr. and Mrs. P. C. Corbin
 Mr. Wayman B. Cunningham
 Dr. and Mrs. Arthur P. Davis
 Betsy Belle Davis
 Mr. and Mrs. Earl T. Davis
 Mrs. Henrietta Delaney
 Mr. and Mrs. John Sooku Dreppaul
 Atty. and Mrs. Howard P. Drew
 Mr. and Mrs. Leroy Enoch
 Collier and Farley, School of Law
 Dr. Dorothy Boulding Ferebee
 Mr. Alexander Fitzgerald
 Mrs. Idenie Fitzgerald

Mrs. Anita J. Flippin
 Mr. and Mrs. Harold W. Ford
 Mr. and Mrs. S. S. Frazier
 Mr. and Mrs. Ralph E. George
 Mr. Walter J. Givens, II
 Mrs. Nona Gibbs
 Mr. and Mrs. M. J. Gillian
 Mrs. L. E. Goldsby
 Mr. Llewelyn Goldsby, Jr.
 Mr. and Mrs. W. H. Goggins
 Mrs. Doris Cooper Grey
 Mr. and Mrs. Ralph P. Greene, Sr.
 Mr. William E. Greene, Jr.
 Mr. and Mrs. William E. Greene, Sr.
 Mr. and Mrs. Lewis C. Gregg
 Mr. and Mrs. Samuel Groves
 Mrs. Katherine Guess
 Mrs. B. W. Hal
 Mr. and Mrs. William Harmon
 Mr. Bartlett J. Hawkins
 Mr. and Mrs. James Hawkins
 Mrs. Geneva Harbert
 Mrs. Anna Arnold Hedgeman
 Mr. and Mrs. Leslie O. Hedgepath
 Miss Martha M. Henry
 Mrs. Pearl Holeman
 Mrs. Gretchen LaCour Holmes
 Mr. and Mrs. John L. Hyman
 Miss Gertrude Jackson
 Miss Jennie L. F. Jackson
 Mrs. Lillian C. Jenkins
 Mrs. Lydia K. Jewey
 Miss Dorothy Roundtree Johnson
 Mr. and Mrs. Frank Johnson
 Mrs. Helen Lee Johnson
 Mrs. J. C. Johnson
 Miss Lulu Johnson
 Mr. T. Walter Johnson
 Bishop and Mrs. Ozro T. Jones
 Mr. William V. Jones
 Mr. and Mrs. Buck H. Kearney
 Miss Katherine V. Kearney
 Mr. and Mrs. Glenie Kemp
 Miss Jenine Ernestine Kemp
 Dr. and Mrs. Howard P. Kennedy
 Mr. Richard G. Kent
 Miss Marian E. LaCour
 Dean and Mrs. Warner Lawson
 Master Alton Mitchelle Lee, III
 Miss Antoinette Marca Lee
 Mr. Clarence E. Lewis
 Rev. and Mrs. Lawrence M. Leake
 Mr. and Mrs. J. W. Maddux
 Mr. Gordon L. Madison
 Dr. and Mrs. LeCount R. Matthews

Major and Mrs. Fred Minnis
 Mr. and Mrs. Ross M. Miller, Sr.
 Rev. and Mrs. A. T. McDaniel
 Mrs. Nancy McDaniel
 Mr. George B. McPhee
 Miss Ada L. Montgomery
 Miss Maurine Elise Moore
 Dr. Clarence Morgan
 Rev. and Mrs. Roy D. Morrison
 Mr. LeRoy E. Nanton
 Mr. Earle O'Dell
 Mr. and Mrs. Charles Orange
 Mr. and Mrs. Arnett L. Osgood, Sr.
 Mrs. C. M. Otis
 Mr. R. L. Parker
 Mr. James R. Paige, Jr.
 Mr. and Mrs. Claude R. Platte, Sr.
 Mr. and Mrs. Benjamin J. Player
 Mr. J. Owen Plummer, Jr.
 Mrs. Maude Rountree
 Mrs. Harryette Greene Rucker
 Mr. B. Felton Sanford, II
 Miss Ruth Scott
 Mrs. Ruth Scott
 Mr. Robert F. Seymour
 Miss Shirley Smith
 Mr. and Mrs. Henry Springer
 Alphonso M. Stanley
 Dr. and Mrs. Frank Steele
 Mr. and Mrs. Alvin Stallings
 Mr. and Mrs. Andrew Strickland
 Miss LaVerne L. Taylor
 Atty. and Mrs. Alford H. Tavernier
 Mrs. Rose Teixeira
 Mrs. Thelma Teixeira
 Mrs. May E. Terrell
 Mr. Joseph W. Thomas, Jr.
 Mrs. Lillian C. Thomas
 Marjorie Omega Thomas
 Mr. and Mrs. Paul Thompson
 Mr. and Mrs. George Thornton
 Miss Albernon Twigg
 Miss Jessie C. Wainwright
 Mr. and Mrs. Wilbur U. Ward
 Mrs. Helen Warner
 Miss Theolda Welborne
 Mrs. H. I. West
 Dr. and Mrs. James A. White
 Mrs. Julia F. P. White
 Mrs. Estelle Williams
 Dr. and Mrs. J. W. Williams
 Mrs. Selma Williams
 Frances June Wilson
 Mr. Franklin Woodston
 Edmundo Del. Yearwood

AUTOGRAPHS







CAMPUS
COVER
AUGUST 2011
ISSUE 1