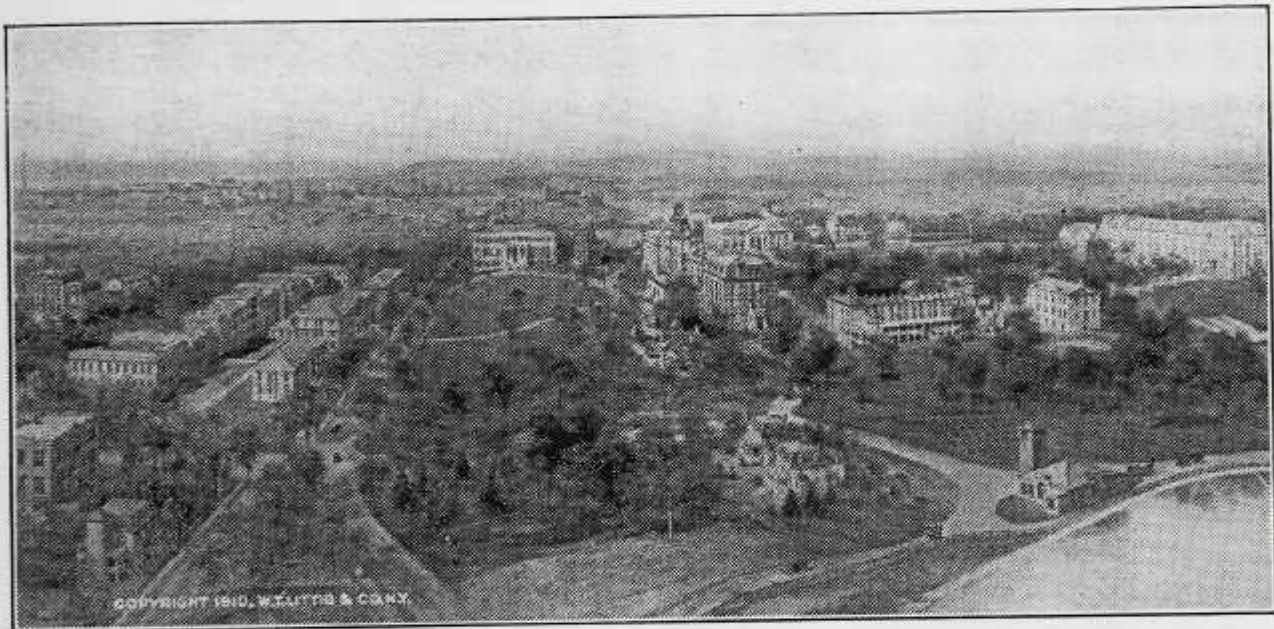


# BOOK I.—UNIVERSITY

---

---



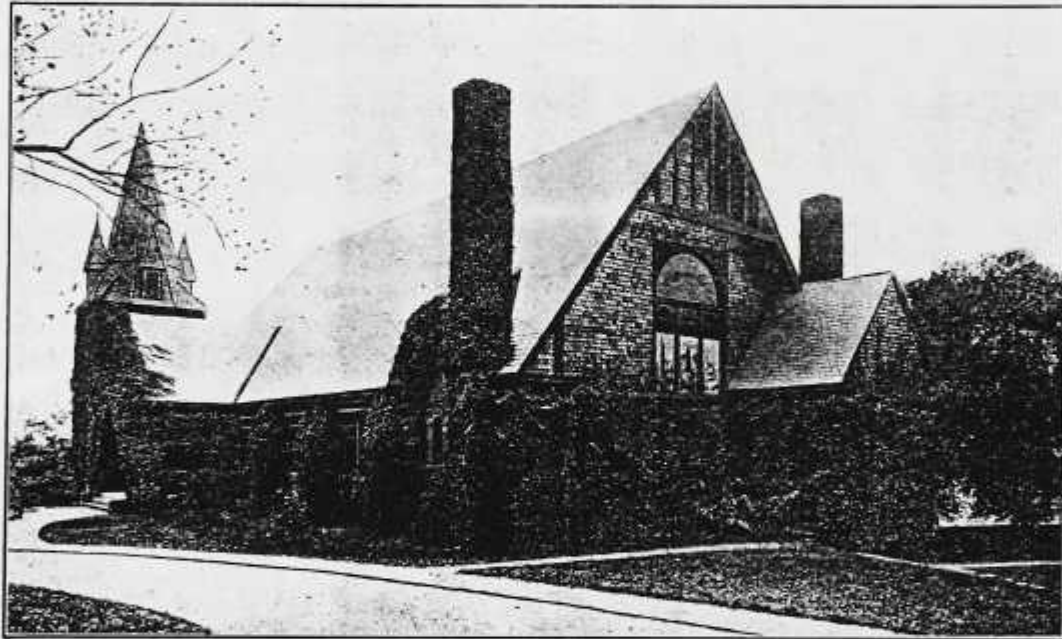


COPYRIGHT 1910, W. LITTLE & CO. N.Y.

BIRD'S-EYE VIEW OF HOWARD UNIVERSITY.



MAIN BUILDING

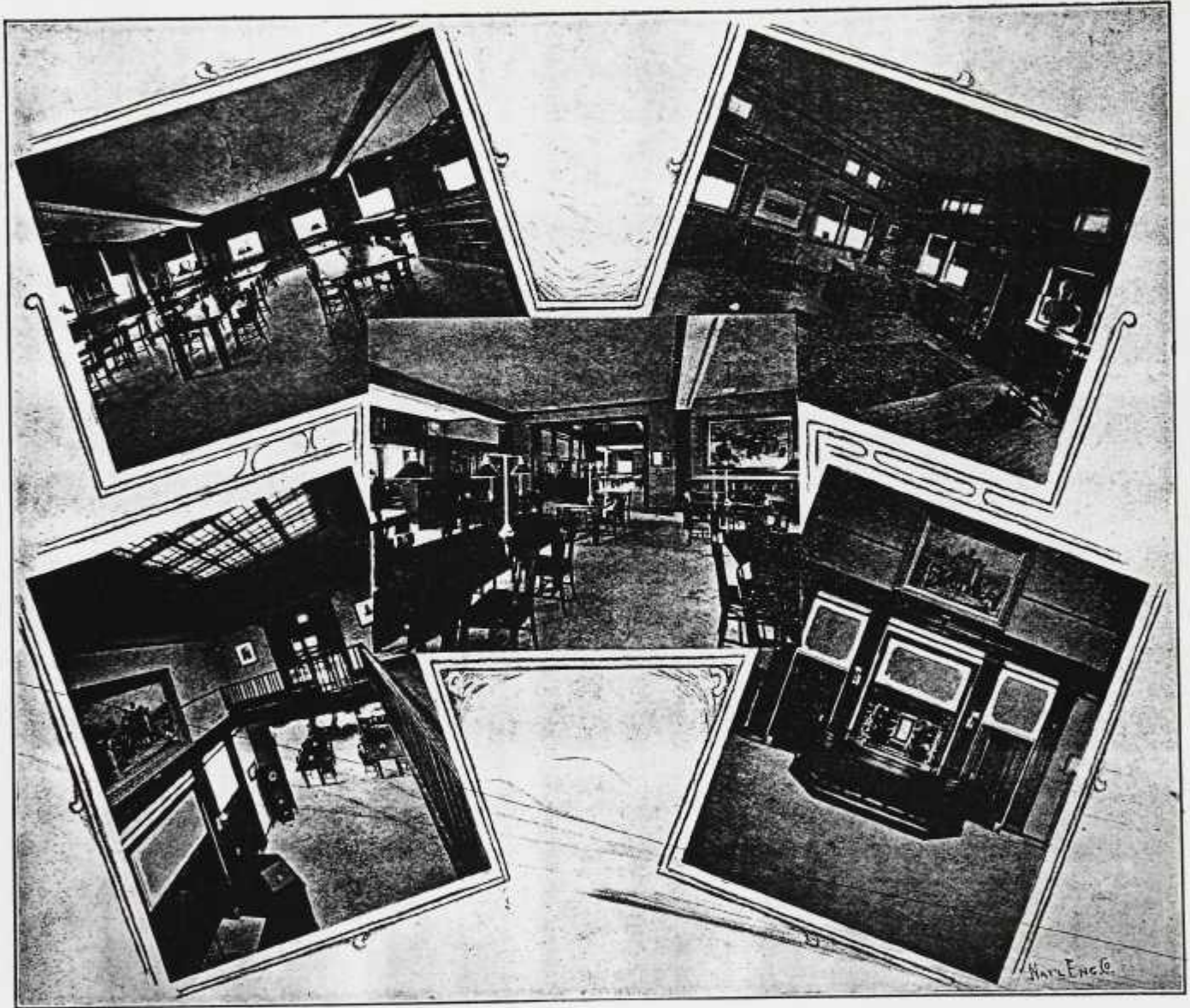


RANKIN MEMORIAL CHAPEL.



ROAD LEADING TO PRESIDENT'S RESIDENCE

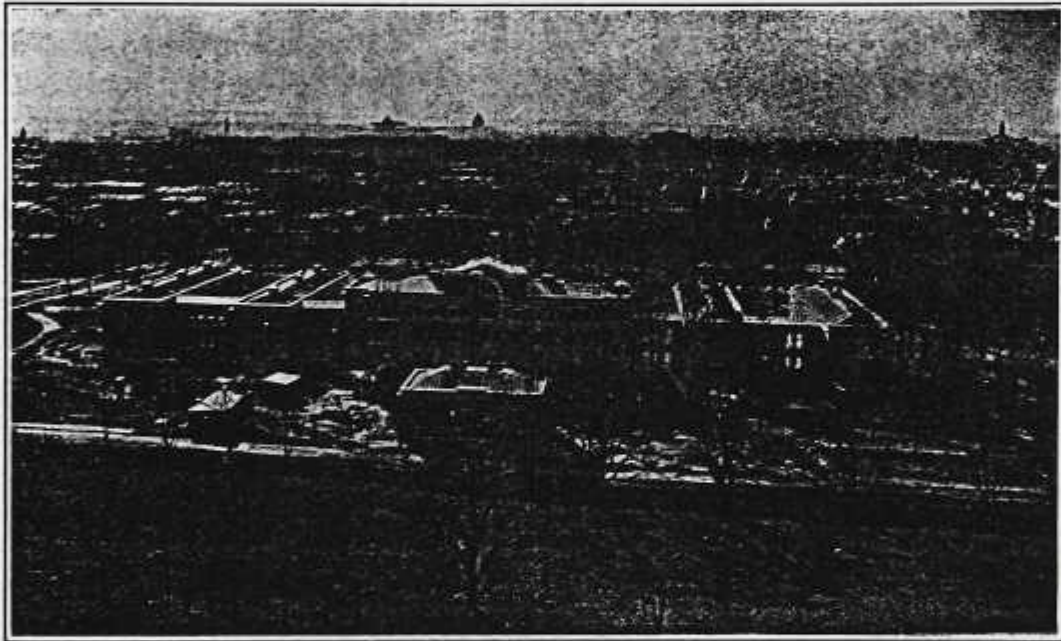
Nikh 1915

The seal of Howard University, featuring a shield with a book and a lamp, surrounded by the text "HOWARD UNIVERSITY WASHINGTON D.C. EST. 1867".

CARNEGIE LIBRARY

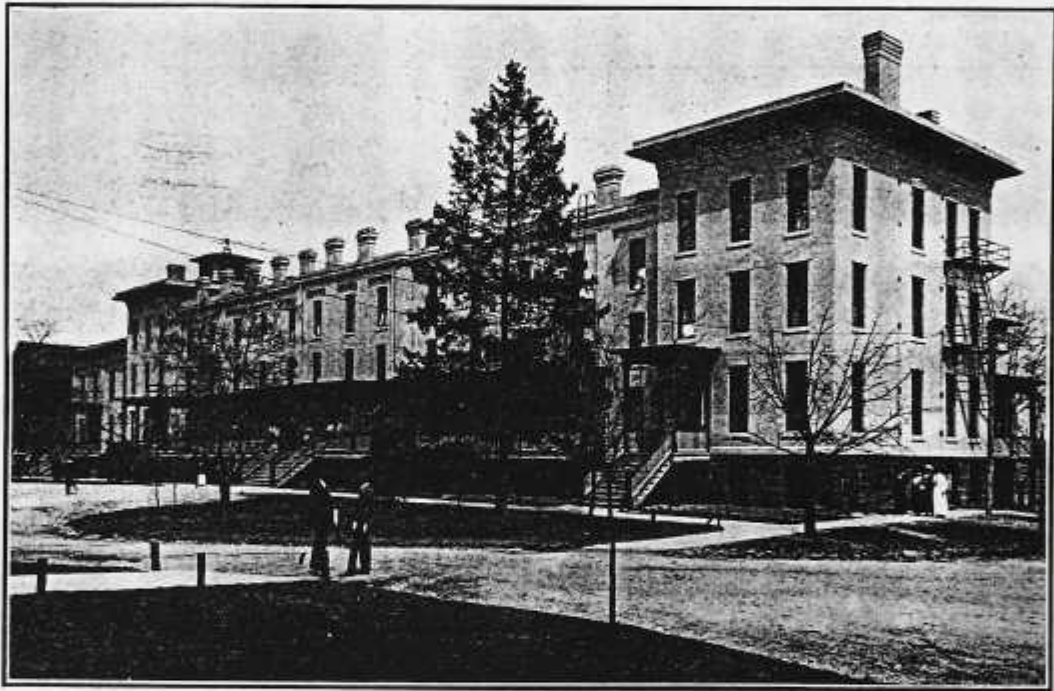


THE PRESIDENT'S OFFICE

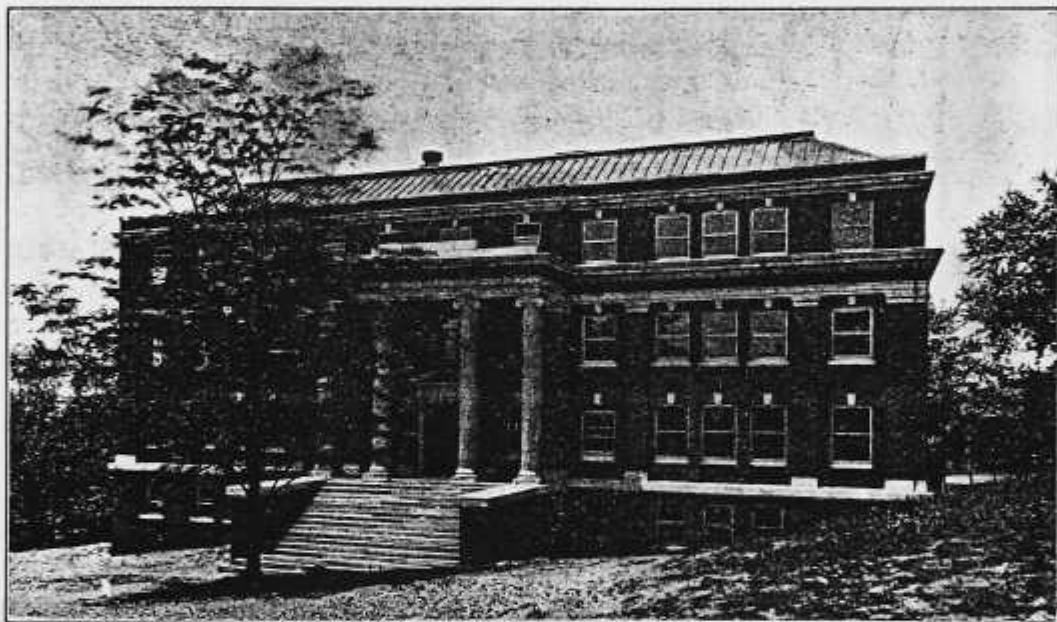


VIEW SOUTH OF MAIN HALL TOWARD THE CITY





MINER HALL



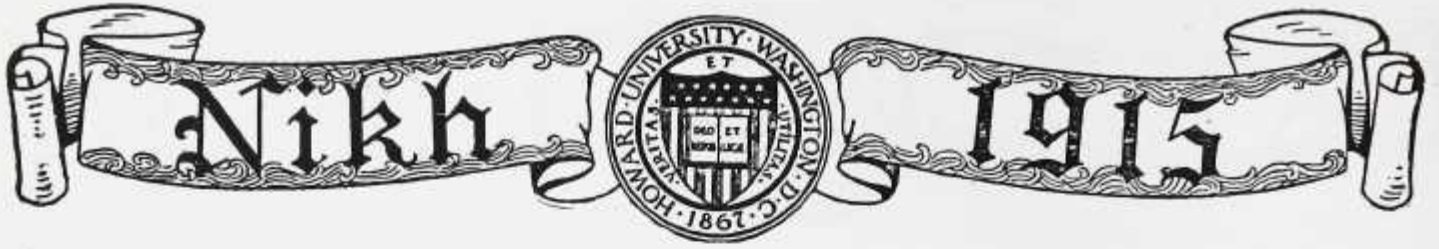
THIRKIELD HALL.



CARNEGIE LIBRARY



CLARKE HALL



HALL OF APPLIED SCIENCES AND INDUSTRIAL ARTS



MEDICAL BUILDING



LAW BUILDING